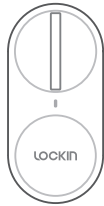




immax
**neo
LITE**
Smart home devices



UŽIVATELSKÝ NÁVOD

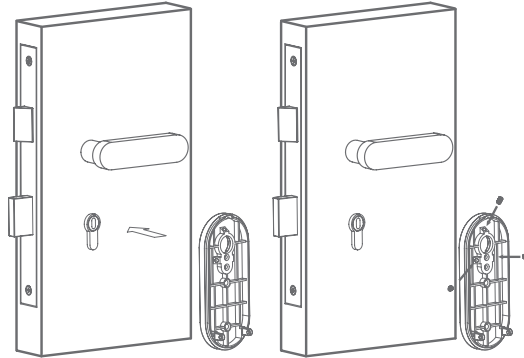
Výrobce a dovozece:
IMMAX, Pohofí 703, 742 85 Vřesina, EU | www.immax.cz
Vyrobeno v P.R.C.



**Immax NEO LITE Smart dveřní zámek Lockin s
klávesnicí a chytrou bránou, BT**

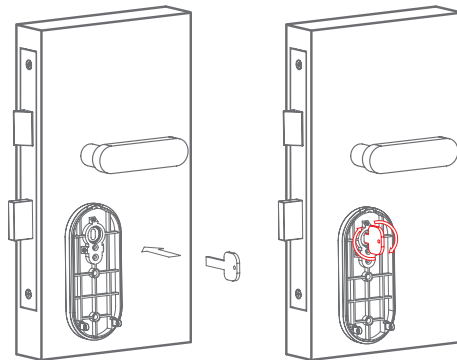
POŽADAVKY NA INSTALACI

1. Nainstalujte základnu na zámek
2. Ujistěte se, že základna je správně nainstalována a zajistěte ji upevňovacími šrouby

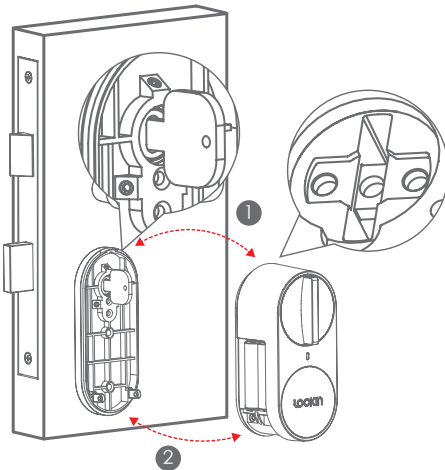


3. Vložte do zámku klíč

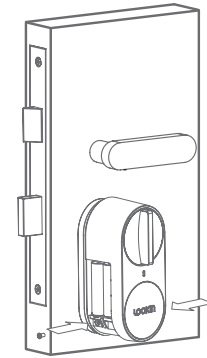
4. Otočením klíče zkontrolujte, zda se dá plynule otáčet a zda jde stříčku zámku zatáhnout.



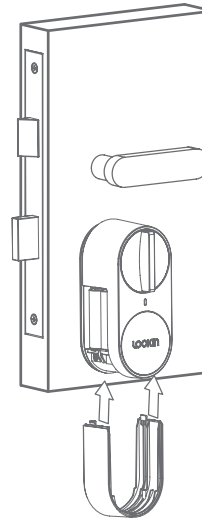
5. Na základnu nainstalujte hlavní tělo zámku. Ujistěte se, že západka je navaknutá na spodní hraně základny a klíč je vložen do drážky otočného knoflíku



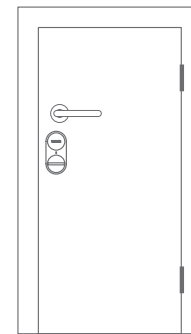
6. Tělo zámku upevněte šrouby: Otočením knoflíku na zámku zkontrolujete, zda vše funguje hladce a bez zábran.



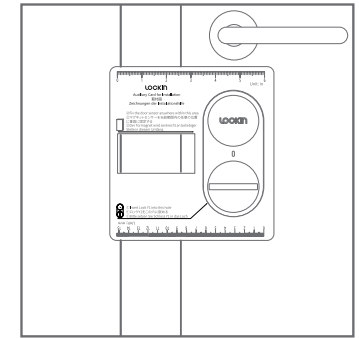
7. Nasaďte kryt baterie.



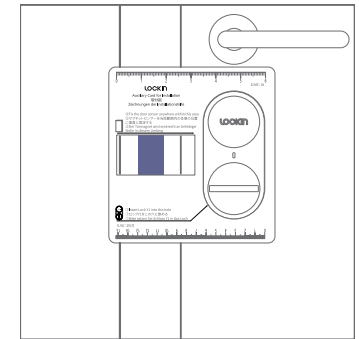
8. Instalace hlavní části zámku je téměř dokončena. Na závěr nainstalujte dveřní magnetický senzor dle následujících pokynů.



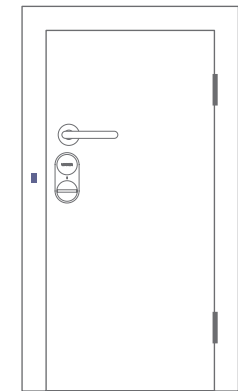
9. Nasaďte Pomocnou kartu pro instalaci na dveřní zámek viz obrázek. Poznámka: Když je zámek na pravé straně dveří, nasaďte Pomocnou kartu obráceně.



10. Na základě určené pozice pomocí karty pro instalaci připevněte dveřní magnetické čidlo na rám dveří pomocí oboustranné lepicí pásky. Poznámka: Magnetický dveřní senzor nemusí fungovat správně v případě instalace senzoru na kovový rám dveří. V tomto případě prosím dveřní magnetický senzor nainstalujte.



11. Tímto je instalace chytrého zámku dokončena.



Instalace je vhodná pouze na zámek s cylindrickou vložkou s prostupovou (průchozí) spojkou.

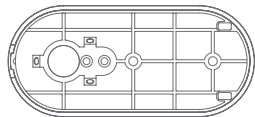
Magnetický senzor



Šroubovák



Základna



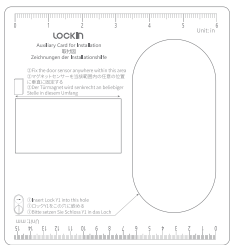
Šroubovák



Šroubek M3*6



Pomocná karta pro instalaci

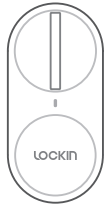


Upevňovací šroub



Oboustranná lepicí páska





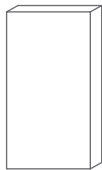
UŽIVATEĽSKÝ NÁVOD

Výrobca a dovozca:
IMMAX, Pohofí 703, 742 85 Vřesina, EU | www.immax.cz
Vyrobené v P.R.C.



Immax NEO LITE Smart dverný zámok Lockin s klávesnicou a chytrou bránou, BT

Magnetický senzor



Skrutkovač



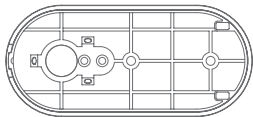
Upevňovacia skrutka



Obojstranná lepiaca páska



Základňa



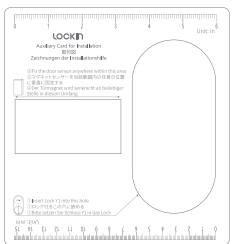
Skrutkovač



Skrutka M3*6

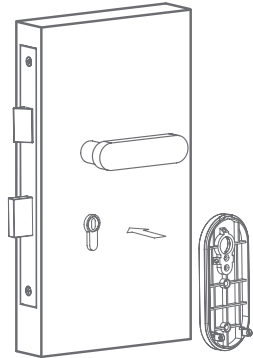


Pomocná karta pre inštaláciu

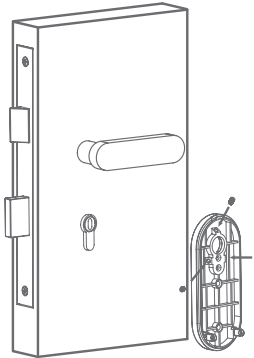


POŽIADAVKY NA INŠTALÁCIU

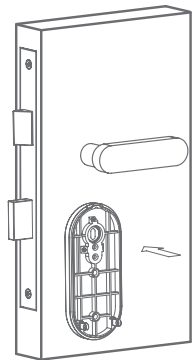
1. Nainštalujte základňu na zámok



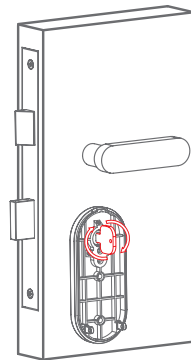
2. Uistite sa, že základňa je správne nainštalovaná a zaistite ju upevňovacími skrutkami



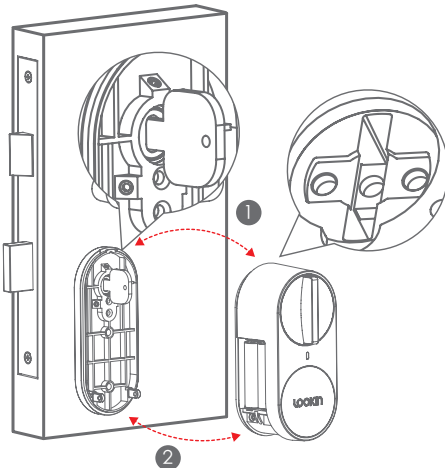
3. Vložte do zámku kľúč



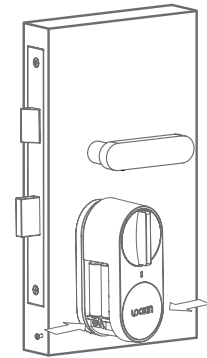
4. Otočením kľúča skontrolujte, či sa dá plynulo otáčať a či ide streľku zámku zatiahnuť.



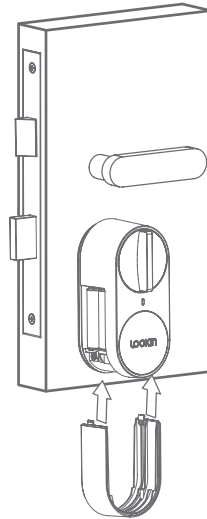
5. Na základňu nainštalujte hlavné telo zámku. Uistite sa, že západka je navŕknutá na spodnej hrane základne a kľúč je vložený do drážky otočného gombíka



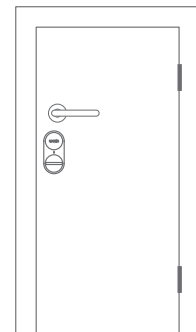
6. Telo zámku upevnite skrutkami: Otočením gombíka na zámku skontrolujete, či všetko funguje hladko a bez zábran



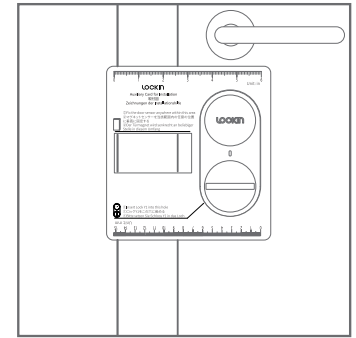
7. Nasadte kryt batérie



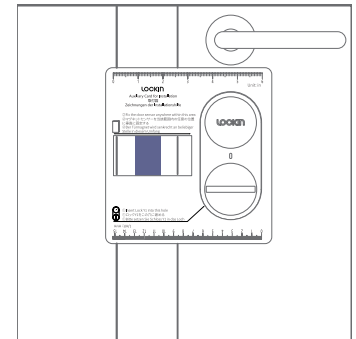
8. Inštalácia hlavnej časti zámku je takmer dokončená. Na záver nainštalujte dverný magnetický senzor podľa nasledujúcich pokynov.



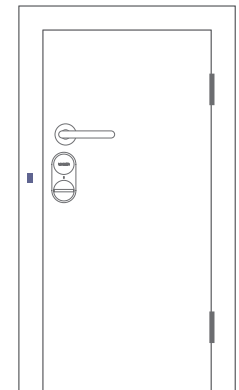
9. Nasadte Pomocnú kartu pre inštaláciu na dverný zámok viď obrázok. Poznámka: Keď je zámok na pravej strane dverí, nasadte Pomocnú kartu obrátene.



10. Na základe určenej pozície pomocou karty pre inštaláciu pripevnite dverný magnetický snímač na rám dverí pomocou obojstrannej lepiacej pásky. Poznámka: Magnetický dverný senzor nemusí fungovať správne v prípade inštalácie senzora na kovový rám dverí. V tomto prípade prosím dverný magnetický senzor neinštalujte.



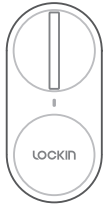
11. Týmto je inštalácia chytrého zámku dokončená.



Inštalácia je vhodná iba na zámok s cylindrickou vložkou s prestupovou (priechodnou) spojku.



immax
**neo
LITE**
Smart home devices



USER MANUAL

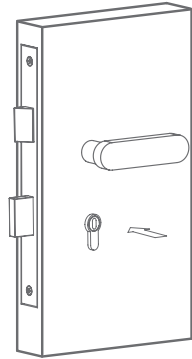
Manufacturer and importer:
IMMAX, Pohofí 703, 742 85 Vřesina, EU |
www.immax.cz Made in P.R.C.



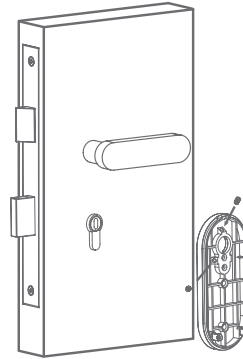
Immax NEO LITE Smart door lock Lockin with keypad and a smart gateway, BT

INSTALLATION REQUIREMENTS

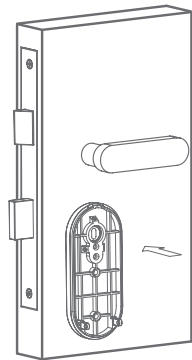
1. Install the base on the lock



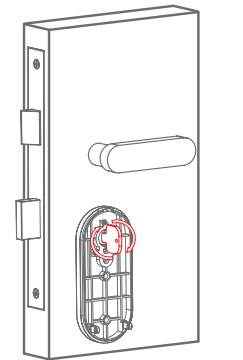
2. Make sure the base is installed correctly and secure it with the fixing screws



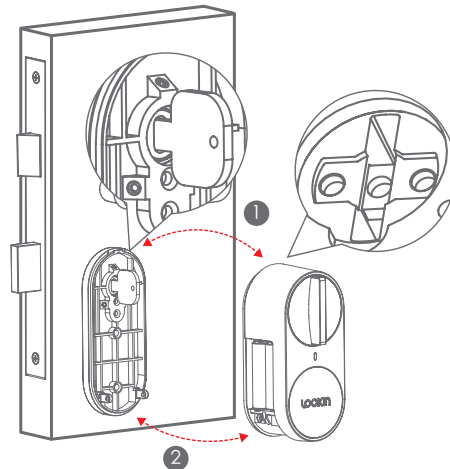
3. Insert the key into the lock



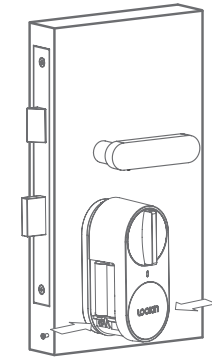
4. By turning the key, check whether it can be turned smoothly and whether the lock pin can be retracted.



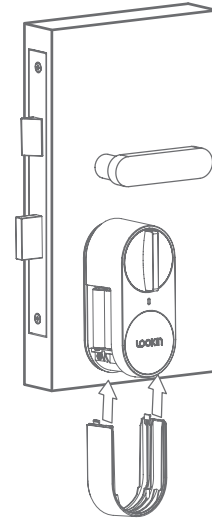
5. Install the main body of the lock on the base. Make sure the latch is engaged on the bottom edge of the base and the key is inserted into the groove of the rotary knob



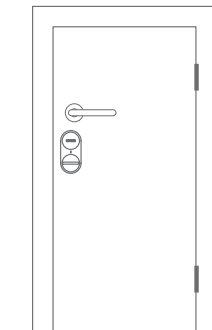
6. Fix the lock body with screws: Turn the knob on the lock to check that everything works smoothly and without obstacles



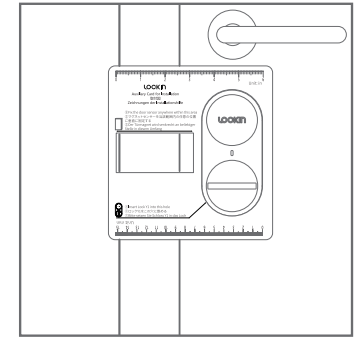
7. Replace the battery cover



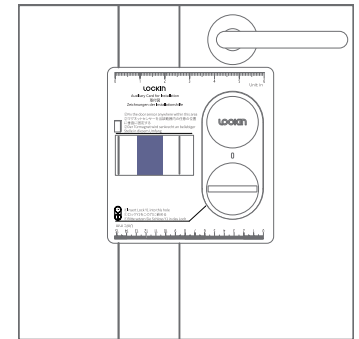
8. The installation of the main part of the lock is almost complete. Finally, install the door magnetic sensor according to the following instructions.



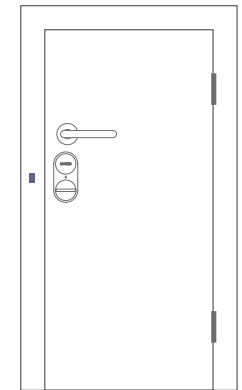
9. Place the Installation Help card on the door lock, see the picture. Note: When the lock is on the right side of the door, insert the Auxiliary Card in reverse.



10. Based on the designated position using the installation card, attach the door magnetic sensor to the door frame using double-sided adhesive tape. Note: The magnetic door sensor may not work properly if the sensor is installed on a metal door frame. In this case, please do not install the door magnetic sensor.



11. This completes the installation of the smart lock.

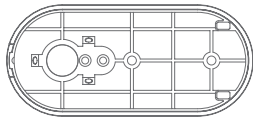


The installation is only suitable for a cylinder lock with a through (through) clutch.

Magnetic sensor



Base



Screwdriver



Screwdriver



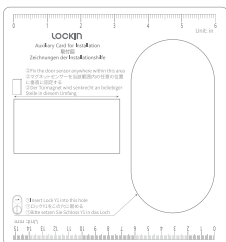
M3*6 screw



Fixing screw



Help tab for installation

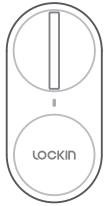


Double-sided tape



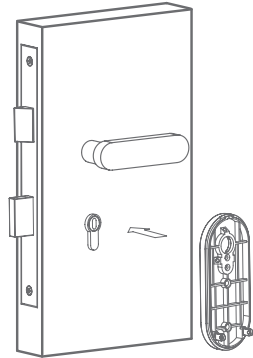


immax
**neo
LITE**
Smart home devices

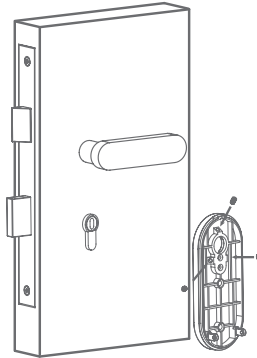


INSTALLATIONSANFORDERUNGEN

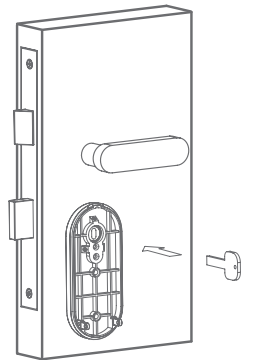
1. Montieren Sie den Sockel auf das Schloss



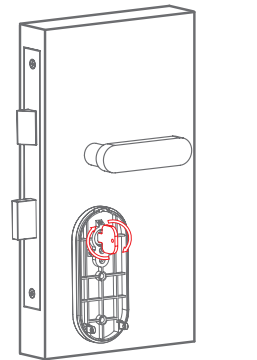
2. Vergewissern Sie sich, dass der Sockel richtig installiert ist und befestigen Sie ihn mit den Befestigungsschrauben



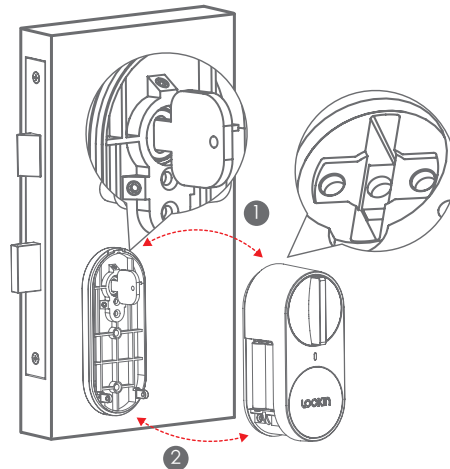
3. Stecken Sie den Schlüssel in das Schloss



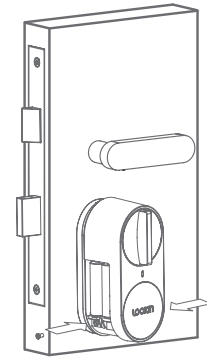
4. Prüfen Sie durch Drehen des Schlüssels, ob er sich leichtgängig drehen lässt und ob der Sperrstift eingezogen werden kann.



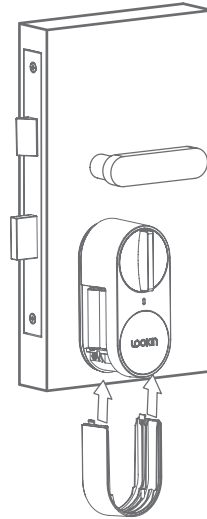
5. Setzen Sie das Hauptgehäuse des Schlosses auf den Sockel. Vergewissern Sie sich, dass der Riegel an der Unterkante des Sockels eingerastet ist und der Schlüssel in die Rille des Drehknopfes eingesteckt ist



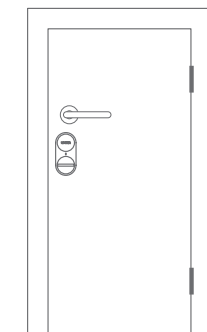
6. Befestigen Sie das Schlossgehäuse mit Schrauben: Drehen Sie den Knauf des Schlosses, um zu prüfen, ob alles reibungslos und ohne Hindernisse funktioniert.



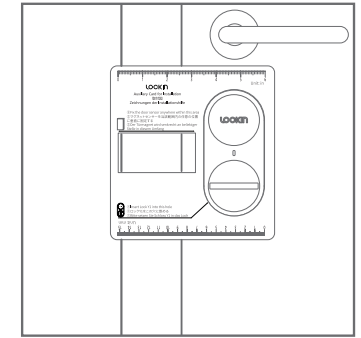
7. Bringen Sie die Batterieabdeckung wieder an.



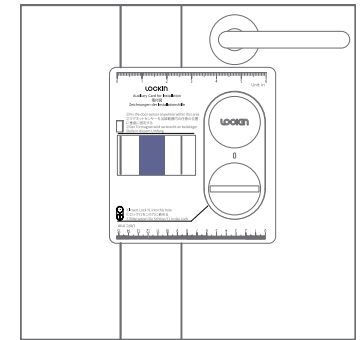
8. Die Installation des Hauptteils des Schlosses ist fast abgeschlossen. Installieren Sie abschließend den Türmagnetsensor gemäß den folgenden Anweisungen.



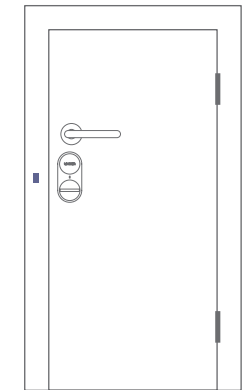
9. Legen Sie die Installationshilfekarte auf das Türschloss, siehe Abbildung. Hinweis: Wenn sich das Schloss auf der rechten Seite der Tür befindet, setzen Sie die Hilfskarte in umgekehrter Reihenfolge ein.



10. Befestigen Sie den magnetischen Türsensor mit doppelseitigem Klebeband an der Türzarge entsprechend der auf der Installationskarte angegebenen Position. Hinweis: Der magnetische Türsensor funktioniert möglicherweise nicht richtig, wenn der Sensor an einem Metallrahmen angebracht wird. In diesem Fall installieren Sie den magnetischen Türsensor bitte nicht.



11. Damit ist die Installation des Smart Locks abgeschlossen.



BENUTZERHANDBUCH

Hersteller und Importeur:
IMMAX, Pohofí 703, 742 85 Vřesina, EU |
www.immax.cz Hergestellt in P.R.C.

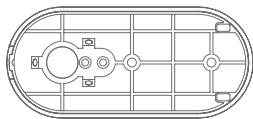


Immax NEO LITE Smart-Türschloss Lockin mit
Tastatur und Smart-Gateway, BT

Magnetischer Sensor



Basis



Schraubenzieher

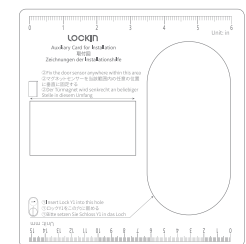
Schraubenzieher

Schraube M3*6



Fixierschraube

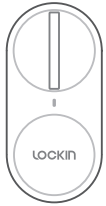
Hilfe-Registerkarte für die Installation



Doppelseitiges Klebeband

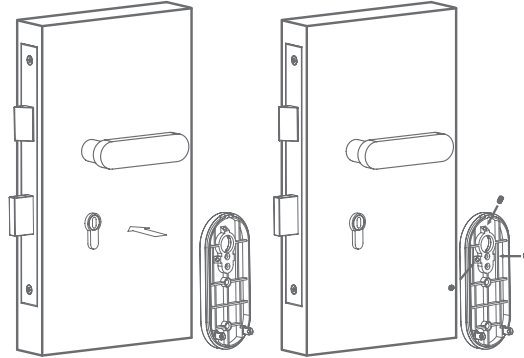


Der Einbau ist nur für ein Zylinderschloss
mit einer Durchgangskupplung geeignet.

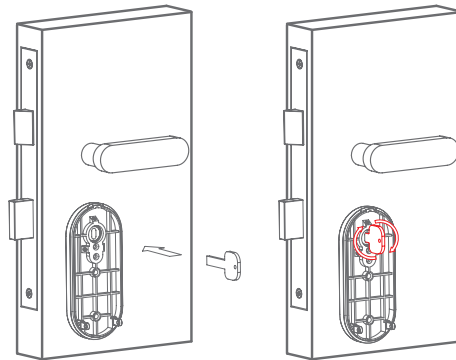


TELEPÍTÉSI KÖVETELMÉNYEK

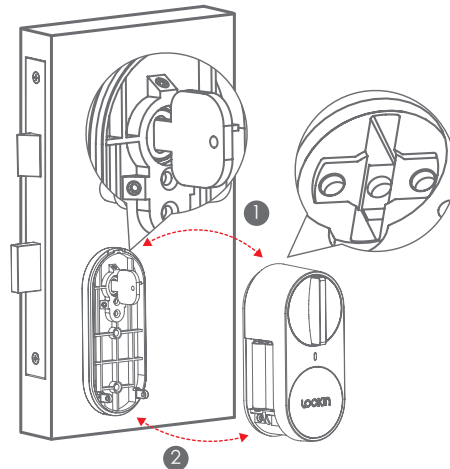
1. Szerelje fel az alapot a zárra
2. Győződjön meg arról, hogy az alap helyesen van-e felszerelve, és rögzítse a rögzítőcsavarokkal.



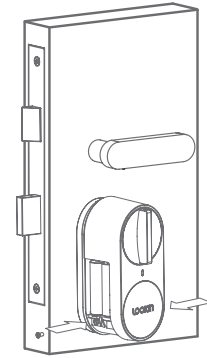
3. Helyezze be a kulcsot a zárba
4. A kulcs elfordításával ellenőrizze, hogy a kulcs simán forgatható-e, és hogy a zárország visszahúzható-e.



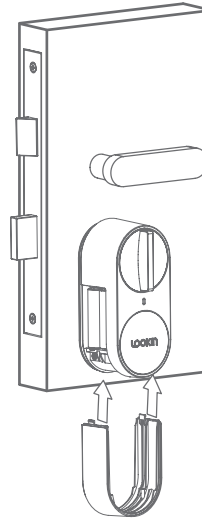
5. Szerelje fel a zár főtestét az alapra. Győződjön meg róla, hogy a retesz az alap alsó szélén van, és a kulcs a forgatógomb homyába van behelyezve.



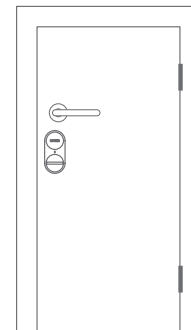
6. Rögzítse a zártestet csavarokkal: Forgassa el a zár gombját, hogy ellenőrizze, hogy minden zökkenőmentesen és akadálymentesen működik-e.



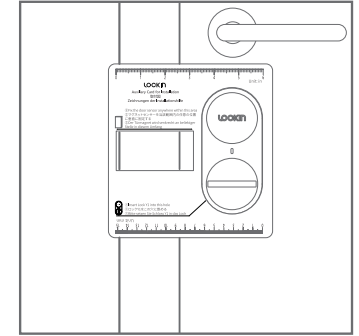
7. Helyezze vissza az elemfedelelet



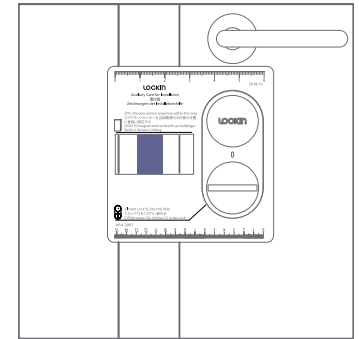
8. A zár fő részének beszerelése majdnem befejeződött. Végül szerelje be az ajtó mágneses érzékelőjét az alábbi utasításoknak megfelelően.



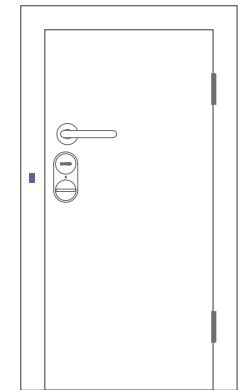
9. Helyezze a telepítési segédkártyát az ajtózárba. lásd a képet. Megjegyzés: Ha a zár az ajtó jobb oldalán van, helyezze be a Segédkártyát fordítva.



10. A szerelőkártya segítségével kijelölt pozíció alapján rögzítse az ajtó mágneses érzékelőjét az ajtókeretre kétoldalas ragasztószalaggal. Megjegyzés: Előfordulhat, hogy az ajtó mágneses érzékelője nem működik megfelelően, ha az érzékelőt fém ajtókeretre szerelik. Ebben az esetben ne szerelje fel az ajtó mágneses érzékelőt.



11. Ezzel az intelligens zár telepítése befejeződött.



A beépítés csak átmenő (átmenő) tengelykapcsolóval ellátott hengerzárhoz alkalmas.

HASZNÁLATI KÉZIKÖNYV

Gyártó és importőr:
IMMAX, Pohoří 703, 742 85 Viesina, EU |
www.immax.cz Made in P.R.C.



Immax NEO LITE intelligens ajtózár Lockin
billentyűzettel és intelligens átjáróval, BT

Mágneses érzékelő



Csavarhúzó



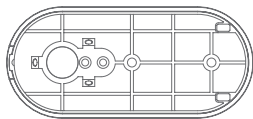
Rögzítő csavar



Kétoldalas ragasztószalag



Bázis



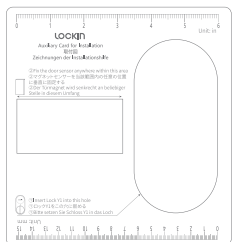
Csavarhúzó



M3*6 csavar

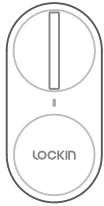


Súgó fül a telepítéshez



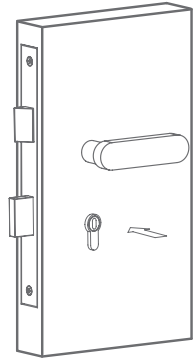


imaxx
**neo
LITE**
Smart home devices

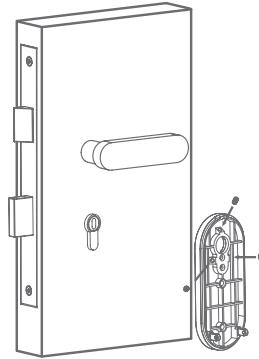


CERINȚE DE INSTALARE

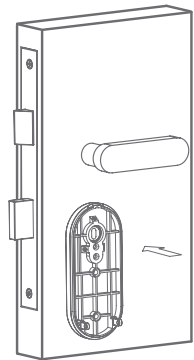
1. Instalați baza pe încuietoare



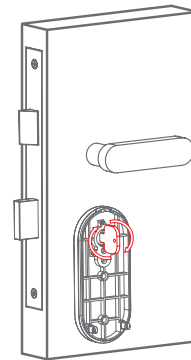
2. Asigurați-vă că baza este instalată corect și fixați-o cu ajutorul șuruburilor de fixare



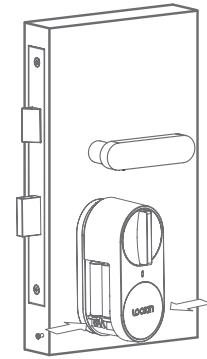
3. Introduceți cheia în încuietoare



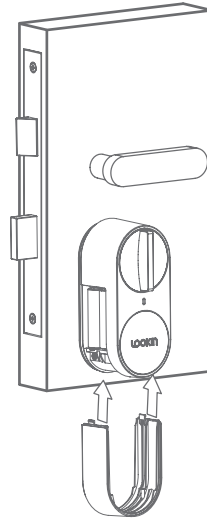
4. Prin rotirea cheii, verificați dacă aceasta poate fi rotită fără probleme și dacă știftul de blocare poate fi retras.



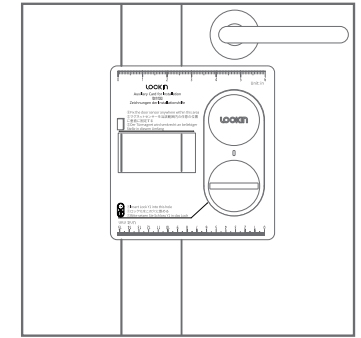
6. Fixați corpul de blocare cu șurubi: Rotiți butonul de pe încuietoare pentru a verifica dacă totul funcționează fără probleme și fără obstacole



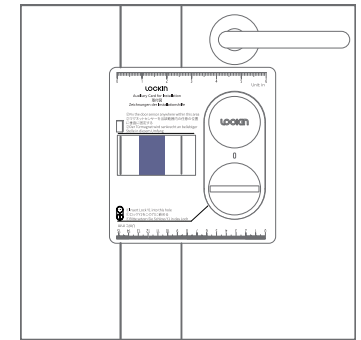
7. Înlocuiți capacul bateriei



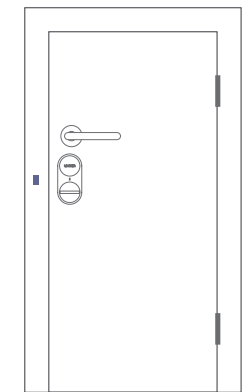
9. Așezați cardul de ajutor pentru instalare pe încuietoarea ușii, a se vedea imaginea. Notă: Când încuietoarea se află pe partea dreaptă a ușii, introduceți cardul auxiliar în sens invers.



10. Pe baza poziției desemnate cu ajutorul cardului de instalare, atașați senzorul magnetic al ușii la cadrul ușii cu ajutorul benzii adezive cu două fețe. Notă: Este posibil ca senzorul magnetic de ușă să nu funcționeze corespunzător dacă senzorul este instalat pe un cadru de ușă metalic. În acest caz, vă rugăm să nu instalați senzorul magnetic de ușă.



11. În acest fel se finalizează instalarea încuietoarei inteligente.



MANUALUL UTILIZATORULUI

Producător și importator:
IMMAX, Pohofí 703, 742 85 Vřesina, EU |
www.immax.cz Made in P.R.C.



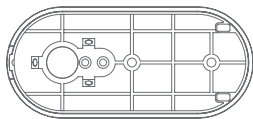
**Immax NEO LITE Încuietoare de ușă inteligentă
Lockin cu tastatură și o poartă inteligentă, BT**

Senzor magnetic



Șurubelniță

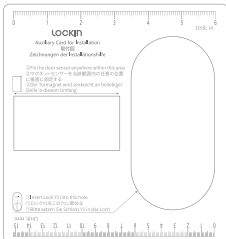
Baza



Șurubelniță

Șurub M3*6

File de ajutor pentru instalare



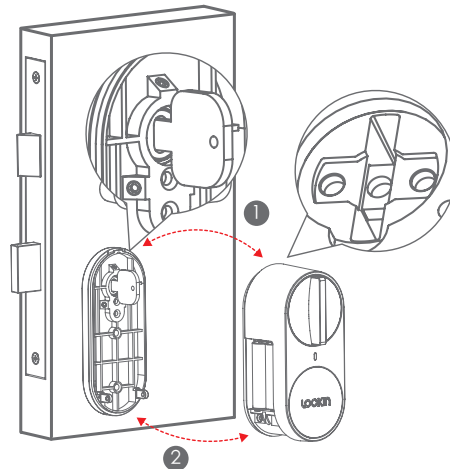
Șurub de fixare



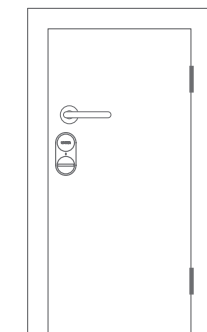
Bandă dublu-adezivă



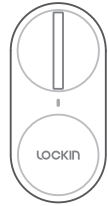
5. Instalați corpul principal al încuietoarei pe bază. Asigurați-vă că zăvorul este angajat pe marginea inferioară a bazei și că cheia este introdusă în canelura butonului rotativ



8. Instalarea părții principale a încuietoarei este aproape finalizată. În cele din urmă, instalați senzorul magnetic al ușii în conformitate cu următoarele instrucțiuni.



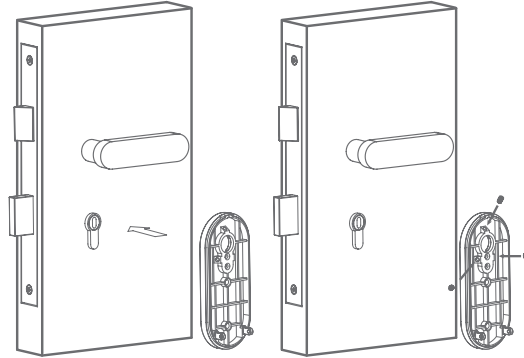
Instalarea este adecvată numai pentru o încuietoare cu cilindru cu ambreiaj de trecere (prin).



WYMAGANIA INSTALACYJNE

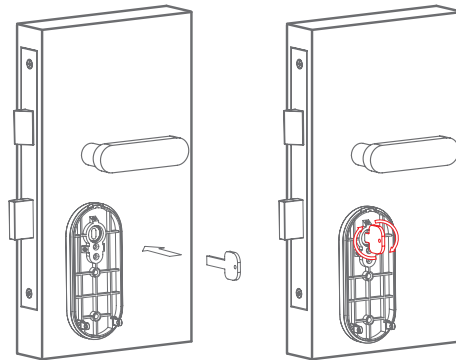
1. Zainstaluj podstawę na zamku

2. Upewnij się, że podstawa jest prawidłowo zainstalowana i zabezpiecz ją śrubami mocującymi

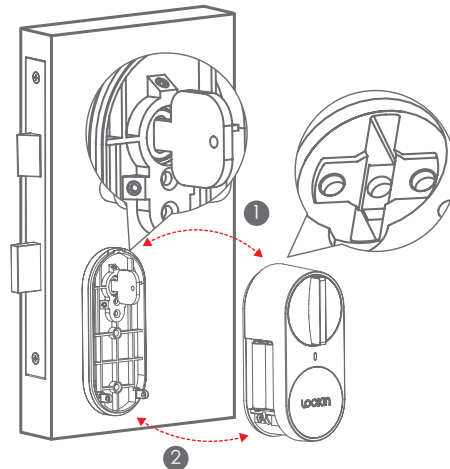


3. Włóż klucz do zamka

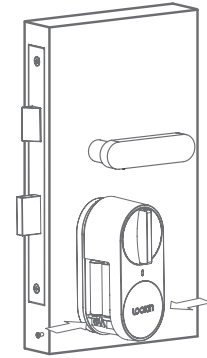
4. Przekręcając klucz, sprawdź, czy można go płynnie przekręcić i czy stworzeń blokady można wsunąć.



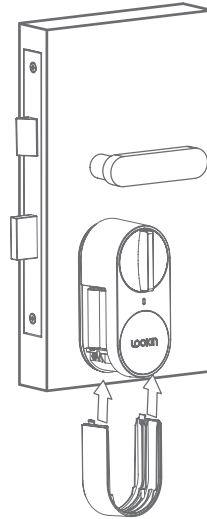
5. Zainstaluj główny korpus zamka na podstawie. Upewnij się, że zatrzask jest zatrzaśnięty na dolnej krawędzi podstawy, a klucz jest włożony w rowek pokrętle.



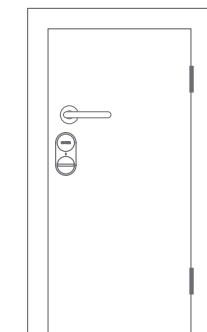
6. Przymocuj korpus zamka za pomocą śrub: Przekręć pokrętle na zamku, aby sprawdzić, czy wszystko działa płynnie i bez przeszkód



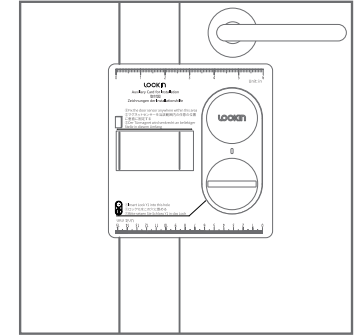
7. Załóż pokrywę baterii



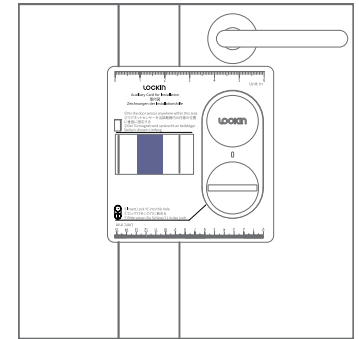
8. Instalacja głównej części zamka jest prawie zakończona. Na koniec zainstaluj czujnik magnetyczny drzwi zgodnie z poniższymi instrukcjami.



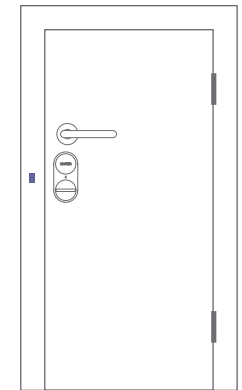
9. Umieść kartę pomocy przy instalacji na zamku drzwi, patrz ilustracja. Uwaga: Jeśli zamek znajduje się po prawej stronie drzwi, włóż kartę pomocniczą odwrotnie.



10. W oparciu o pozycję wyznaczoną na karcie instalacyjnej, przymocuj czujnik magnetyczny drzwi do ramy drzwi za pomocą dwustronnej taśmy samoprzylepnej. Uwaga: Magnetyczny czujnik drzwiowy może nie działać prawidłowo, jeśli zostanie zainstalowany na metalowej ramie drzwi. W takim przypadku nie należy instalować czujnika magnetycznego drzwi.



11. Na tym kończy się instalacja inteligentnego zamka.



INSTRUKCJA OBSŁUGI

Producent i importer:
IMMAX, Pohofí 703, 742 85 Vřesina, EU |
www.immax.cz Made in P.R.C.

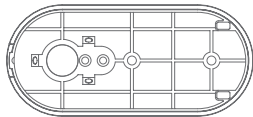


Immax NEO LITE Inteligentny zamek do drzwi z klawiaturą i inteligentną bramką, BT

Czujnik magnetyczny



Podstawa

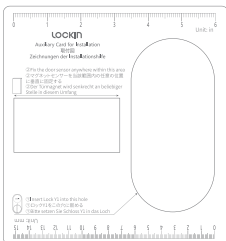


Śrubokręt

Śrubokręt

Śruba M3*6

Karta pomocy dla instalacji



Śruba mocująca



Taśma dwustronna

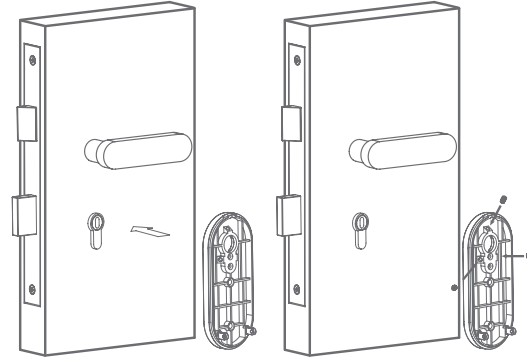


Instalacja jest odpowiednia tylko dla zamka bębnowego ze sprzęgłem przelotowym.



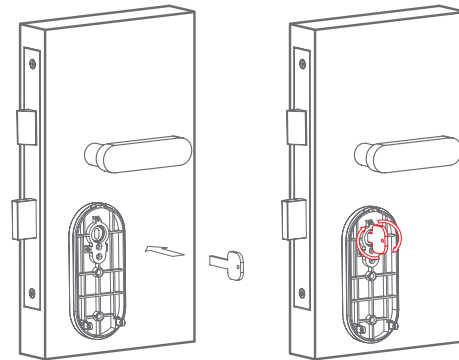
ИЗИСКВАНИЯ ЗА ИНСТАЛИРАНЕ

1. Монтирайте основата върху ключалката
2. Уверете се, че основата е монтирана правилно, и я закрепете с винтовете за закрепване.

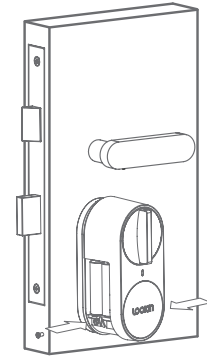


3. Поставете ключа в ключалката

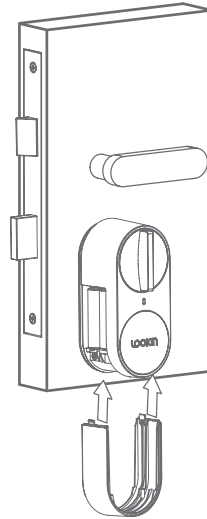
4. Като завъртите ключа, проверете дали той може да се завърти плавно и дали щифтът на ключалката може да се прибере.



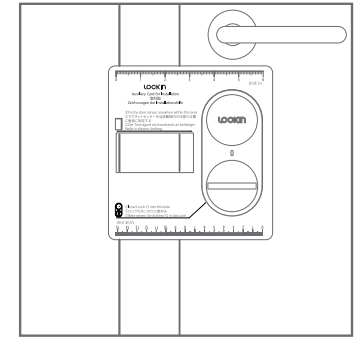
6. Закрепете тялото на ключалката с винтове: Завъртете копчето на ключалката, за да проверите дали всичко работи гладко и без пречки



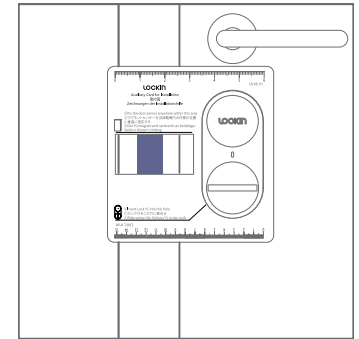
7. Поставете капака на батерията



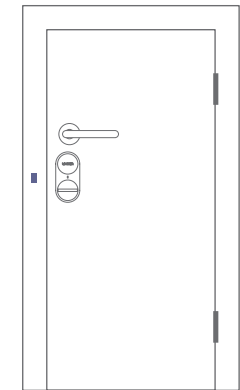
9. Поставете картата за помощ при инсталиране върху ключалката на вратата, вижте снимката. Забележка: Когато ключалката е от дясната страна на вратата, поставете Картата за помощ при инсталиране в обратна посока.



10. Въз основа на определената позиция с помощта на монтажната карта прикрепете магнитния сензор към рамката на вратата с помощта на двустранна залепваща лента. Забележка: Магнитният сензор за врата може да не работи правилно, ако сензорът е монтиран на метална рамка на вратата. В този случай, моля, не инсталирайте магнитния сензор за врата.



11. С това инсталацията на интелигентната ключалка е завършена.



РЪКОВОДСТВО ЗА ПОТРЕБИТЕЛЯ

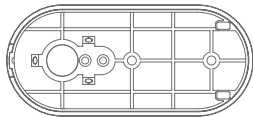
Производител и вносител:
IMMAX, Pohoří 703, 742 85 Vřesina, EC |
www.immax.cz Произведено в П.Р.К.



Immax NEO LITE Интелигентна брава за врата Заклучване с клавиатура и интелигентен шлюз, BT

Магнитен сензор

База



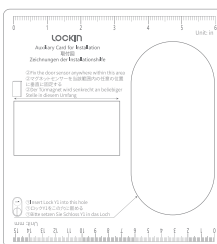
Отвертка

Отвертка

Винт М3*6

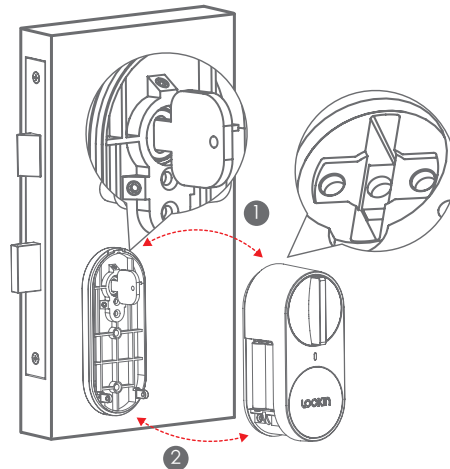
Раздел Помощ за инсталиране

Фиксиращ винт

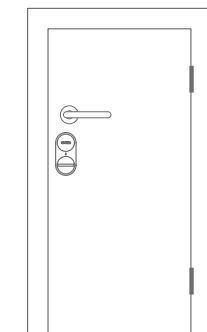


Двустранна лента

5. Монтирайте основното тяло на ключалката върху основата. Уверете се, че ключалката е захваната за долния край на основата и ключът е поставен в жлеба на въртящото се копче.



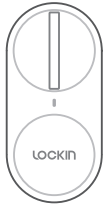
8. Монтажът на основната част на ключалката е почти завършен. Накрая монтирайте магнитния сензор на вратата съгласно следните инструкции.



Монтажът е подходящ само за цилиндрична
ключалка с проходен съединител.



immax
**neo
LITE**
Smart home devices



BRUGERMANUAL

Producent og importør:
IMMAX, Pohofí 703, 742 85 Vřesina, EU [...] www.immax.cz
Fremstillet i P.R.C.



Immax NEO LITE Smart dørlås Lockin med tastatur og en smart gateway, BT

Magnetisk sensor



Skruetrækker



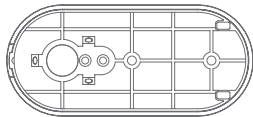
Fastgørelsesskrue



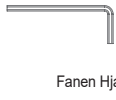
Dobbeltklæbende tape



Base



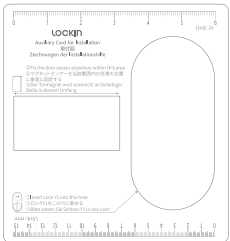
Skruetrækker



M3*6 skrue

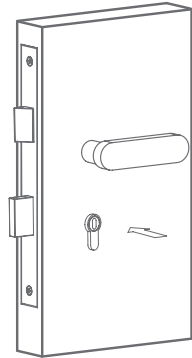


Fanen Hjælp til installation

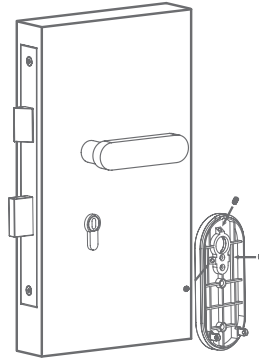


INSTALLATIONSKRAV

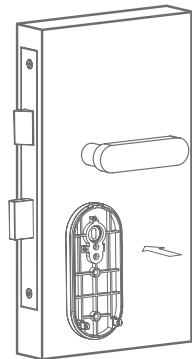
1. Monter basen på låsen



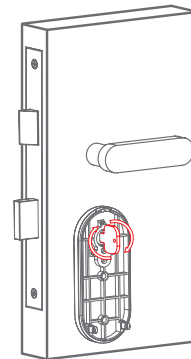
2. Sørg for, at basen er installeret korrekt, og fastgør den med fastgørelsesskruerne.



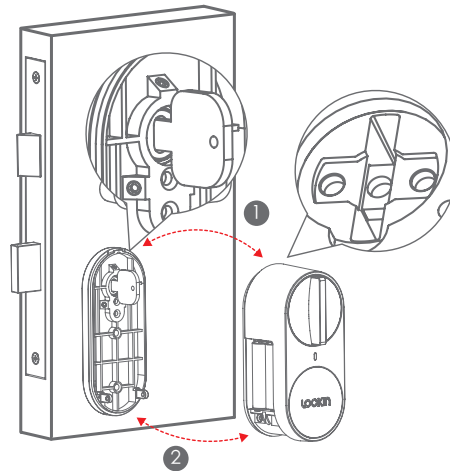
3. Sæt nøglen ind i låsen



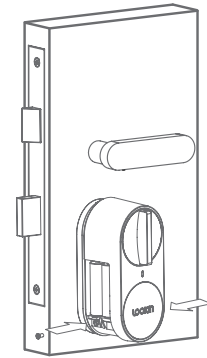
4. Ved at dreje nøglen skal du kontrollere, om den kan drejes jævnt, og om låsestiften kan trækkes tilbage.



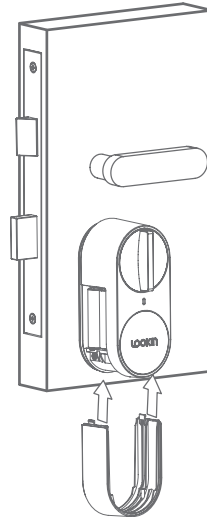
5. Montér låsens hoveddel på basen. Sørg for, at låsen er i indgreb på den nederste kant af basen, og at nøglen er sat ind i rillen på drejeknappen.



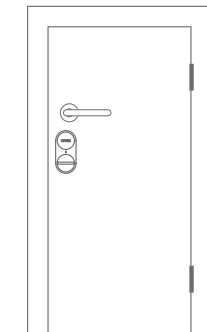
6. Fastgør låsekroppen med skruer: Drej knappen på låsen for at kontrollere, at alt fungerer problemfrit og uden forhindringer.



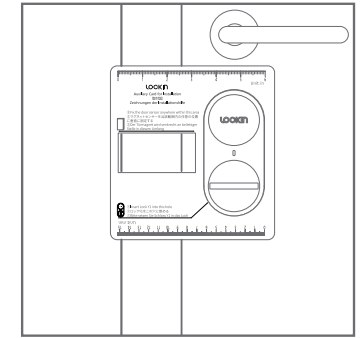
7. Sæt batteridækslet på igen



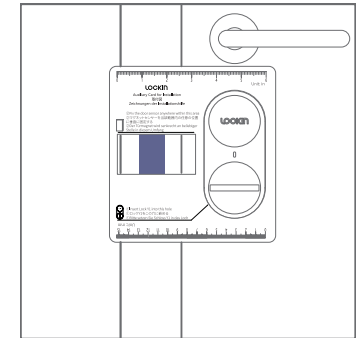
8. Installationen af hoveddelen af låsen er næsten færdig. Til sidst skal du installere dørens magnetiske sensor i henhold til følgende instruktioner.



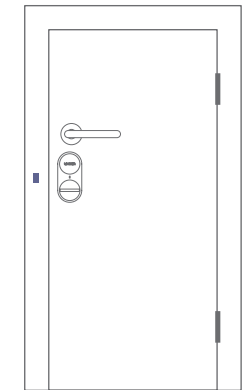
9. Placer installationshjælpekortet på dørlåsen, se billedet. Bemærk: Når låsen er på højre side af døren, skal du indsætte hjælpekortet omvendt.



10. Baseret på den angivne position på installationskortet fastgøres den magnetiske dørsensor til dørkarmen med dobbeltklæbende tape. Bemærk: Den magnetiske dørsensor fungerer muligvis ikke korrekt, hvis sensoren er installeret på en metaldørkarm. I dette tilfælde skal du ikke installere den magnetiske dørsensor.



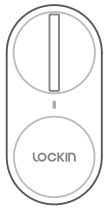
11. Dette afslutter installationen af smartlåsen.



Installationen er kun egnet til en cylinderlås med en gennemgående kobling.

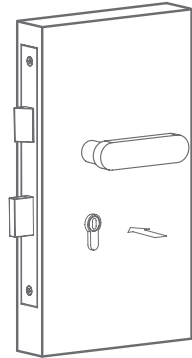


immax
**neo
LITE**
Smart home devices

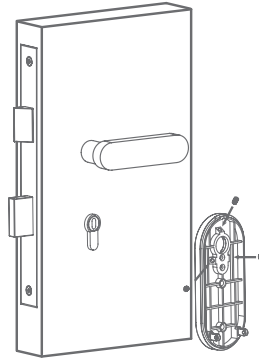


INSTALLATIEVEREISTEN

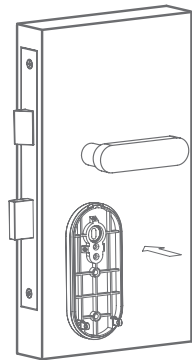
1. Installeer de basis op het slot



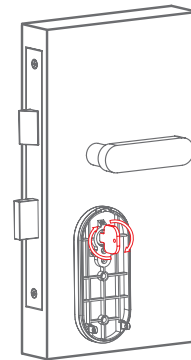
2. Controleer of de basis correct is geïnstalleerd en zet hem vast met de bevestigingsschroeven



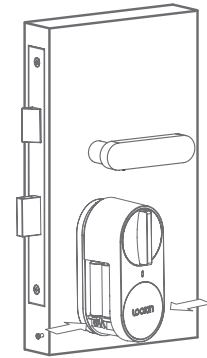
3. Steek de sleutel in het slot



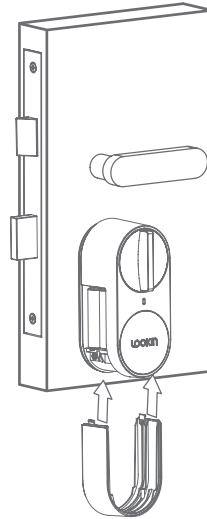
4. Controleer door het draaien van de sleutel of deze soepel kan worden rondgedraaid en of de borgpen kan worden ingetrokken.



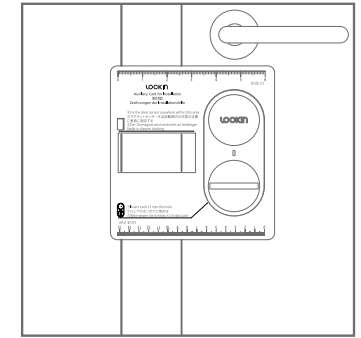
6. Zet het slothuis vast met schroeven: Draai de knop op het slot om te controleren of alles soepel en zonder obstakels werkt



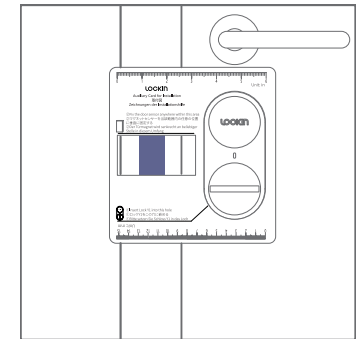
7. Plaats het batterijklepje terug



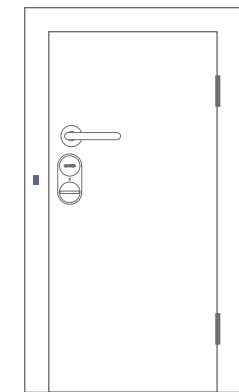
9. Plaats de installatiehulpkaart op het deurslot, zie de afbeelding. Opmerking: Als het slot zich aan de rechterkant van de deur bevindt, plaatst u de Hulpkaart in omgekeerde volgorde.



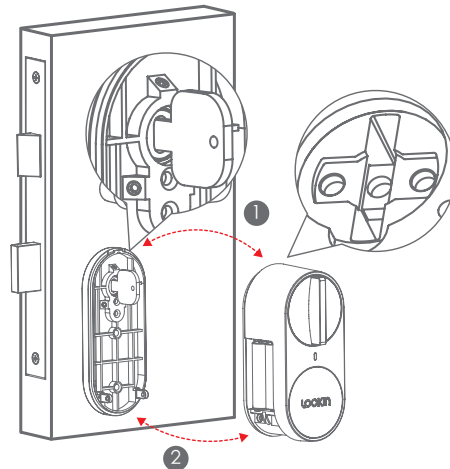
10. Bevestig de magnetische deursensor aan het deurkozijn op basis van de aangewezen positie met behulp van de installatiekaart met dubbelzijdig plakband. Opmerking: De magnetische deursensor werkt mogelijk niet goed als de sensor wordt geïnstalleerd op een metalen deurkozijn. Installeer de deurmagnetische sensor in dat geval niet.



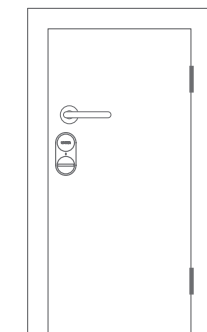
11. Hiermee is de installatie van het slimme slot voltooid.



5. Installeer de hoofdbehuizing van het slot op de basis. Zorg ervoor dat de grendel vastzit aan de onderkant van de basis en dat de sleutel in de groef van de draaiknop zit.



8. De installatie van het hoofdgedeelte van het slot is bijna voltooid. Installeer tot slot de magnetische sensor van de deur volgens de volgende instructies.



GEBRUIKERSHANDLEIDING

Fabrikant en importeur:
IMMAX, Pohofí 703, 742 85 Vřesina, EU |
www.immax.cz Gemaakt in P.R.C.

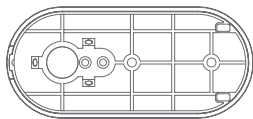


Immax NEO LITE Slim deurslot Lockin met keypad en een slimme gateway, BT

Magnetische sensor



Basis

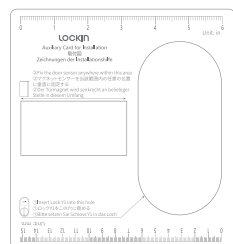


Schroevendraaier

Schroevendraaier

M3*6 schroef

Help-tabblad voor installatie



Bevestigingsschroef



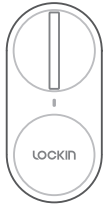
Dubbelzijdige tape



De installatie is alleen geschikt voor een cilinderslot met een doorgaande koppeling.



immax
**neo
LITE**
Smart home devices



KASUTUSJUHEND

Tootja ja importija:
IMMAX, Pohofí 703, 742 85 Vřesina, EU |
www.immax.cz Made in P.R.C.



Immax NEO LITE nutikas ukسلukk Lockin koos
klaviatuuri ja nutika värvavaga, BT

Magnetiline andur



Kruvikeeraja



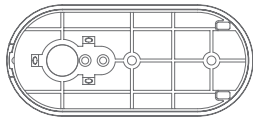
Kinnituskrugi



Kahepoolne teip



Baas



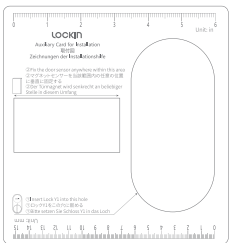
Kruvikeeraja



M3*6 kruvi

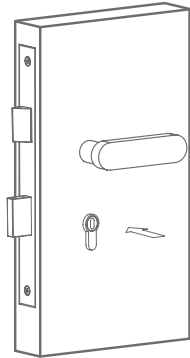


Paigaldamise abileht

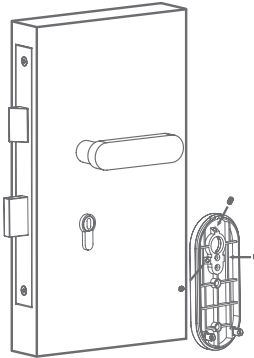


PAIGALDUSNÕUDED

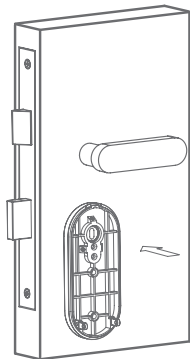
1. Paigaldage alus lukule



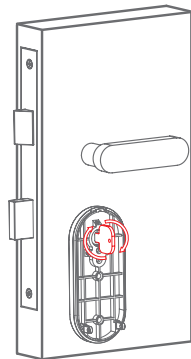
2. Veenduge, et alus on õigesti paigaldatud ja kinnitage see kinnituskruididega.



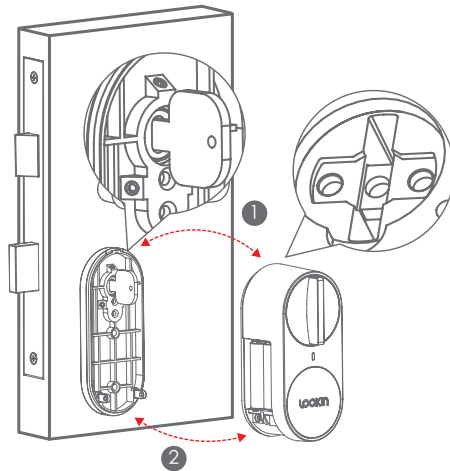
3. Sisestage võti lukku



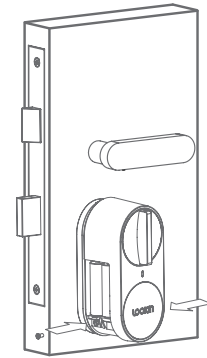
4. Kontrollige võtit keerates, kas seda saab sujuvalt keerata ja kas lukustusnuppu saab tagasi tõmmata.



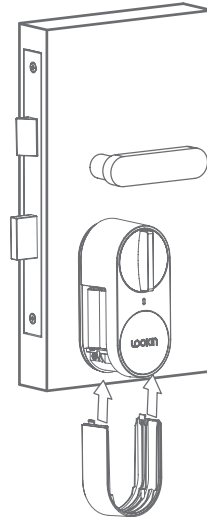
5. Paigaldage luku põhikorpusele. Veenduge, et sulgur on aluse alumisel serval ja võti on sisestatud pöördenupu soonde.



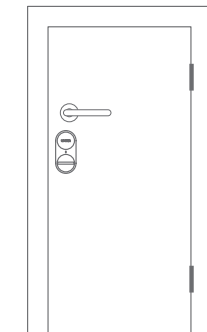
6. Kinnitage lukukorpuse kruvidega: Keerake luku nuppu, et kontrollida, kas kõik toimib sujuvalt ja takistusteta.



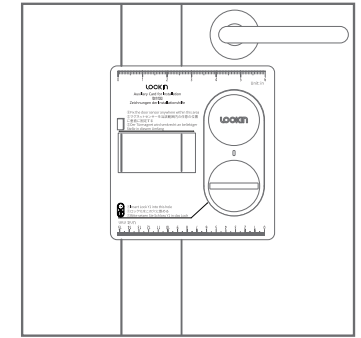
7. Asetage patarei kate tagasi



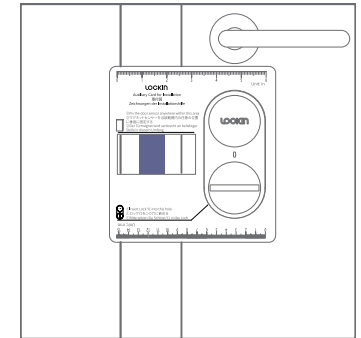
8. Luku põhiosa paigaldamine on peaaegu lõpetatud. Lõpuks paigaldage ukse magnetandur vastavalt järgmistele juhistele.



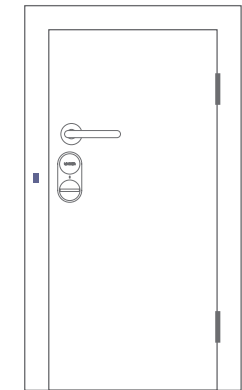
9. Asetage paigaldusabi kaart ukse lukule, vt pilti. Märkus: Kui lukk on ukse paremal pool, asetage paigaldusabikaart tagurpidi.



10. Paigaldage ukse magnetandur paigalduskaardi abil määratud asukoha alusel kahepoolse kleepindi abil ukseraamile. Märkus: uksemagnetandur ei pruugi korralikult töötada, kui andur on paigaldatud metallist ukseraamile. Sellisel juhul ärge paigaldage ukse magnetandurit.



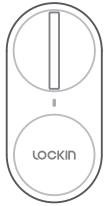
11. Sellega on nutiluku paigaldamine lõpule viidud.



Paigaldus sobib ainult läbiva (läbiva) siduriga silindrilukule.

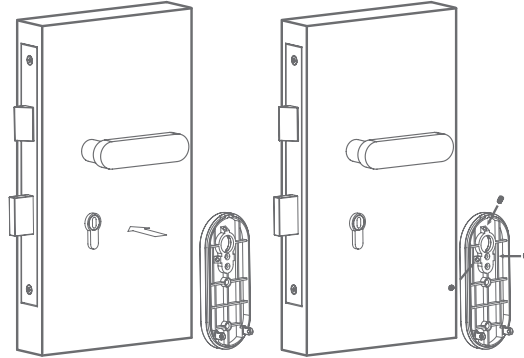


immax
**neo
LITE**
Smart home devices



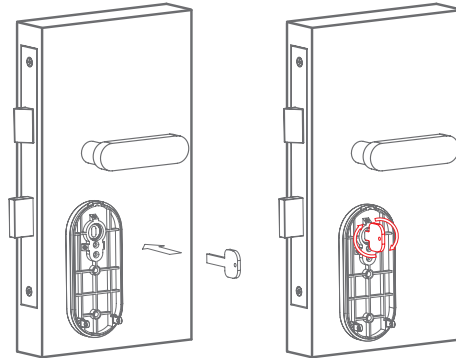
ASENNUSVAATIMUKSET

1. Asenna jalusta lukkoon



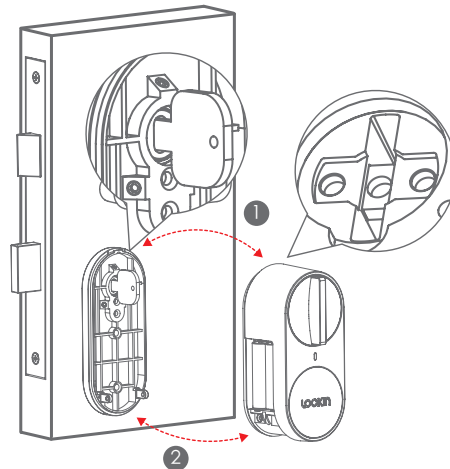
2. Varmista, että jalusta on asennettu oikein ja kiinnitä se kiinnitysruuveilla.

3. Aseta avain lukkoon

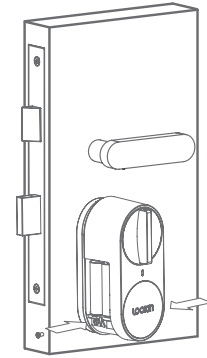


4. Tarkista avainta kääntämällä, voidaanko sitä kääntää tasaisesti ja voidaanko lukitusappi vetää sisään.

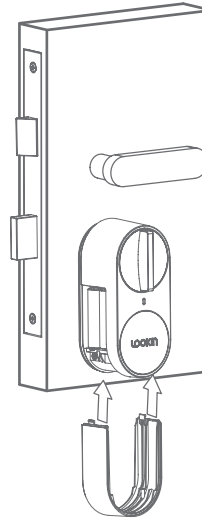
5. Asenna lukon runko alustaan. Varmista, että salpa on kytketty pohjan alareunaan ja että avain on asetettu kiertonupin uraan.



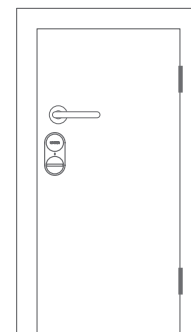
6. Kiinnitä lukkorunko ruuveilla: Käännä lukon nuppia tarkistaaksesi, että kaikki toimii sujuvasti ja esteettä.



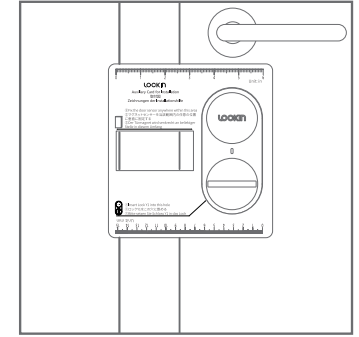
7. Aseta paristokotelon kansi takaisin paikalleen



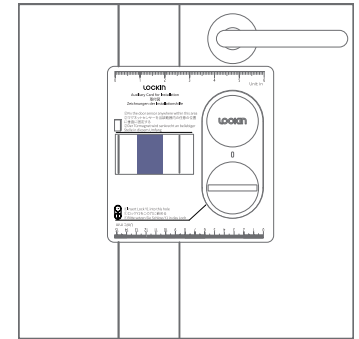
8. Lukon pääosan asennus on lähes valmis. Asenna lopuksi oven magneettianturi seuraavien ohjeiden mukaisesti.



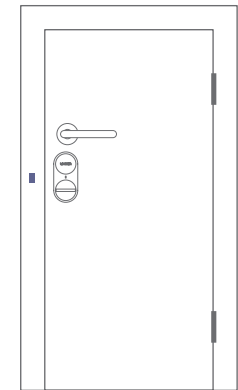
9. Aseta asennusohjekortti ovi lukkoon, katso kuva. Huomautus: Kun lukko on oven oikealla puolella, aseta Asennusapukortti päinvastoin.



10. Kiinnitä oven magneettianturi asennuskortin avulla määritetyn sijainnin perusteella oven karmiin kaksipuolisella teipillä. Huomautus: Oven magneettitunnistin ei välttämättä toimi kunnolla, jos tunnistin asennetaan metalliseen ovenkarmiin. Älä asenna ovimagneettianturia tässä tapauksessa.



11. Tämä viimeistelee älylukon asennuksen.



KÄYTTÄJÄN KÄSIKIRJA

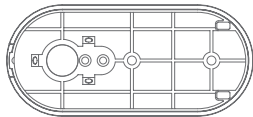
Valmistaja ja maahantuojat:
IMMAX, Pohofí 703, 742 85 Vřesina, EU |
www.immax.cz Made in P.R.C.



Immax NEO LITE Älykäs ovi lukko Lockin, jossa on näppäimistö ja älykäs yhdyskäytävä, BT

Magneettinen anturi

Base



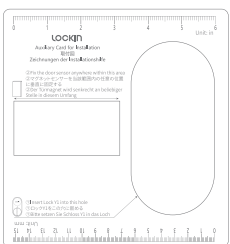
Ruuvimeisseli

Ruuvimeisseli

M3*6 ruuvi

Ohje-välilehti asennusta varten

Kiinnitysruuvi



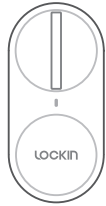
Kaksipuolinen teippi



Asennus soveltuu vain sylinterilukolle, jossa on läpivientikytkin.

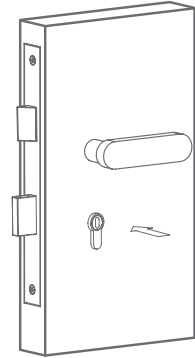


immax
**neo
LITE**
Smart home devices

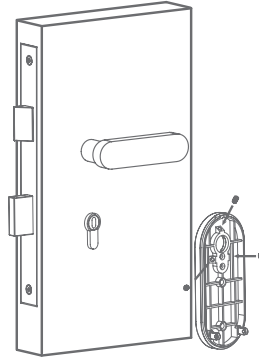


EXIGENCES EN MATIÈRE D'INSTALLATION

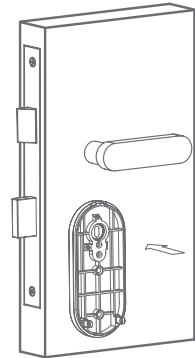
1. Installer la base sur la serrure



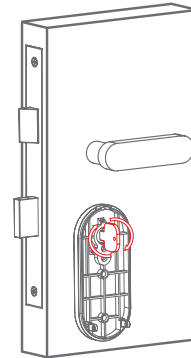
2. Assurez-vous que la base est correctement installée et fixez-la à l'aide des vis de fixation.



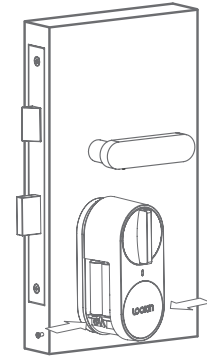
3. Insérer la clé dans la serrure



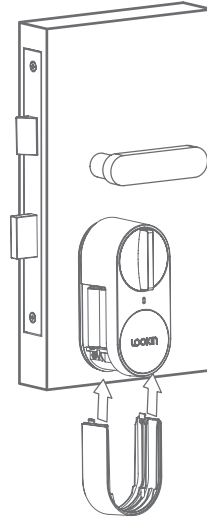
4. En tournant la clé, vérifiez si elle peut être tournée en douceur et si la goupille de verrouillage peut être rétractée.



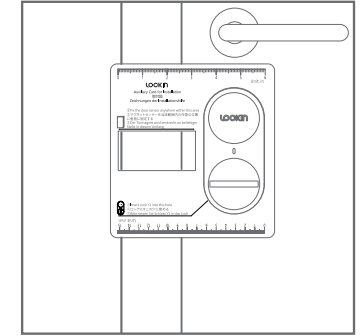
6. Fixer le corps de la serrure à l'aide de vis : Tourner le bouton de la serrure pour vérifier que tout fonctionne sans problème et sans obstacle.



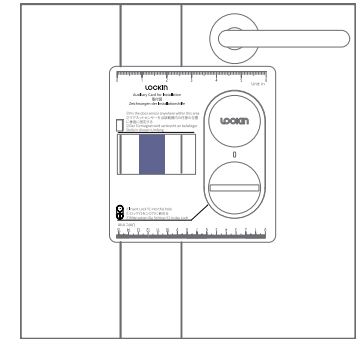
7. Remettre le couvercle de la batterie en place



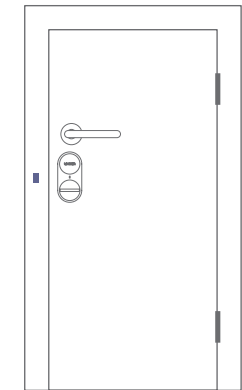
9. Placez la carte d'aide à l'installation sur la serrure de la porte, voir l'image. Remarque : lorsque la serrure se trouve sur le côté droit de la porte, insérez la carte auxiliaire dans le sens inverse.



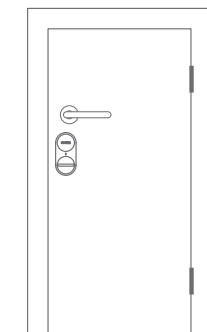
10. En fonction de la position désignée sur la carte d'installation, fixez le capteur magnétique de porte sur le cadre de la porte à l'aide d'un ruban adhésif double face. Remarque : le capteur magnétique de porte peut ne pas fonctionner correctement s'il est installé sur un cadre de porte métallique. Dans ce cas, n'installez pas le capteur magnétique de porte.



11. L'installation de la serrure intelligente est terminée.



8. L'installation de la partie principale de la serrure est presque terminée. Enfin, installez le capteur magnétique de la porte en suivant les instructions ci-dessous.



MANUEL DE L'UTILISATEUR

Fabricant et importateur :
IMMAX, Pohofí 703, 742 85 Vřesina, EU |
www.immax.cz Fabriqué en R.P.C.

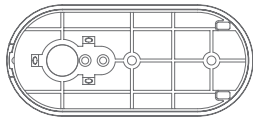


Immax NEO LITE Serrure de porte intelligente Lockin avec clavier et passerelle intelligente, BT

Capteur magnétique



Base



Tournevis



Tournevis



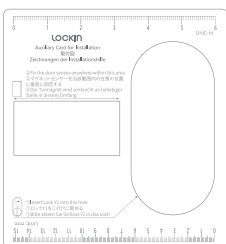
Vis M3*6



Vis de fixation



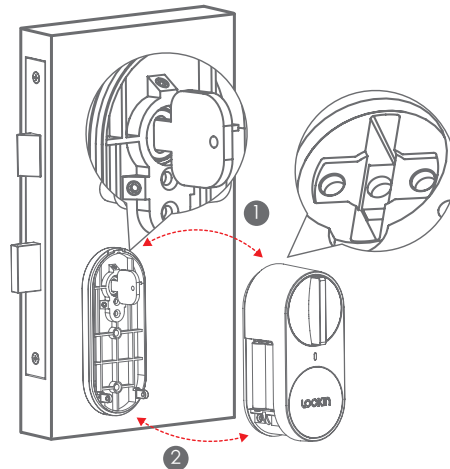
Onglet d'aide à l'installation



Ruban adhésif double face



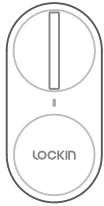
5. Installez le corps principal de la serrure sur la base. Assurez-vous que le loquet est engagé sur le bord inférieur de la base et que la clé est insérée dans la rainure du bouton rotatif.



L'installation ne convient que pour une serrure cylindrique avec un embrayage transversant.



immax
**neo
LITE**
Smart home devices



ΕΓΧΕΙΡΙΔΙΟ ΧΡΗΣΤΗ

Κατασκευαστής και εισαγωγέας:
742 85 Vřesina, EU |
www.immax.cz Made in P.R.C.



Immax NEO LITE Έξυπνη κλειδαριά πόρτας Lockin με πληκτρολόγιο και έξυπνη πύλη, BT

Μαγνητικός αισθητήρας



Κατσαβίδι



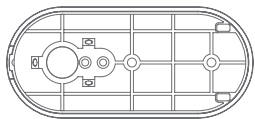
Βίδα στερέωσης



Ταινία διπλής όψης



Βάση



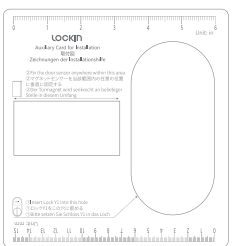
Κατσαβίδι



Βίδα M3*6

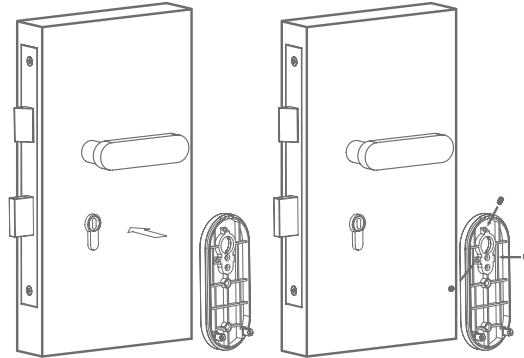


Καρτέλα βοήθειας για την εγκατάσταση

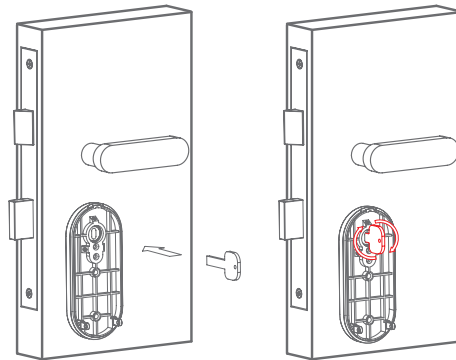


ΑΠΑΙΤΗΣΕΙΣ ΕΓΚΑΤΑΣΤΑΣΗΣ

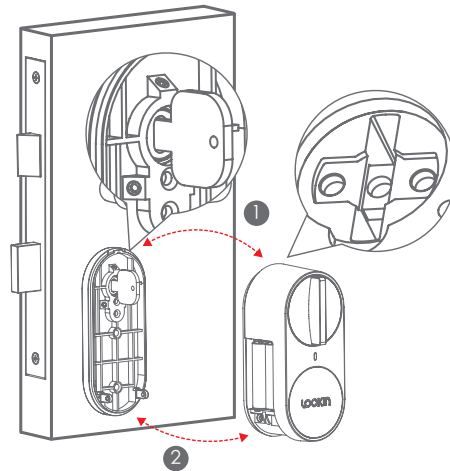
1. Τοποθετήστε τη βάση στην κλειδαριά
2. Βεβαιωθείτε ότι η βάση έχει τοποθετηθεί σωστά και ασφαλίστε την με τις βίδες στερέωσης.



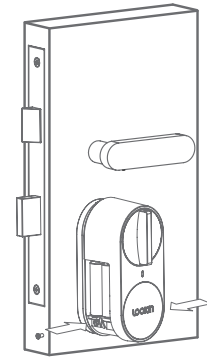
3. Εισάγετε το κλειδί στην κλειδαριά
4. Περιστρέφοντας το κλειδί, ελέγξτε αν μπορεί να περιστραφεί ομαλά και αν ο πείρος της κλειδαριάς μπορεί να αποσυρθεί.



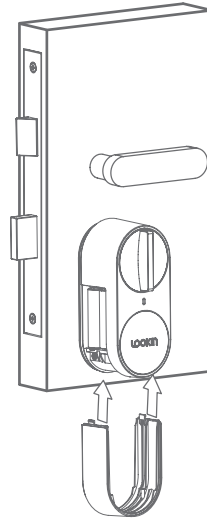
5. Τοποθετήστε το κύριο σώμα της κλειδαριάς στη βάση. Βεβαιωθείτε ότι το μάνταλο έχει εμπλακεί στο κάτω άκρο της βάσης και ότι το κλειδί έχει εισαχθεί στην εγκοπή του περιστροφικού κομβίου



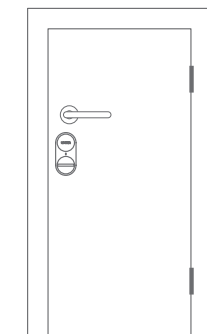
6. Στερεώστε το σώμα της κλειδαριάς με βίδες. Γυρίστε το κομμάτι της κλειδαριάς για να ελέγξετε ότι όλα λειτουργούν ομαλά και χωρίς εμπόδια.



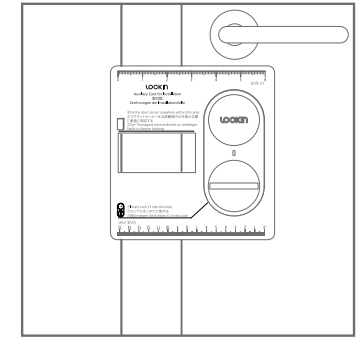
7. Τοποθετήστε το κάλυμμα της μπαταρίας



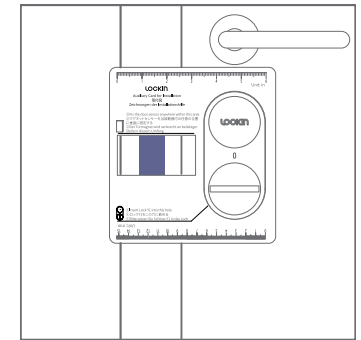
8. Η εγκατάσταση του κύριου μέρους της κλειδαριάς έχει σχεδόν ολοκληρωθεί. Τέλος, εγκαταστήστε τον μαγνητικό αισθητήρα σύμφωνα με τις ακόλουθες οδηγίες.



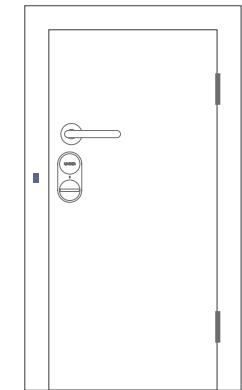
9. Τοποθετήστε την κάρτα Βοήθεια εγκατάστασης στην κλειδαριά της πόρτας, βλείτε εικόνα. Σημείωση: Όταν η κλειδαριά βρίσκεται στη δεξιά πλευρά της πόρτας, τοποθετήστε την Κάρτα Βοηθητικής Βοήθειας αντίστροφα.



10. Με βάση την καθορισμένη θέση με την κάρτα εγκατάστασης, στερεώστε τον μαγνητικό αισθητήρα πόρτας στο πλαίσιο της πόρτας χρησιμοποιώντας αυτοκόλλητη ταινία διπλής όψης. Σημείωση: Ο μαγνητικός αισθητήρας πόρτας ενδέχεται να μην λειτουργεί σωστά εάν ο αισθητήρας εγκατασταθεί σε μεταλλικό πλαίσιο πόρτας. Σε αυτή την περίπτωση, μην εγκαταστήσετε τον μαγνητικό αισθητήρα πόρτας.



11. Έτσι ολοκληρώνεται η εγκατάσταση της έξυπνης κλειδαριάς.



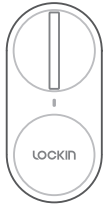
Η εγκατάσταση είναι κατάλληλη μόνο για κυλινδρική κλειδαριά με διαμετρή (διαμετρή) συμπλέκτη.



immax

neo
LITE

Smart home devices



MANUALE UTENTE

Produttore e importatore:
IMMAX, Pohofí 703, 742 85 Vřesina, EU |
www.immax.cz Made in P.R.C.



Immax NEO LITE Serratura intelligente per porte con
tastiera e gateway intelligente, BT

Sensore magnetico



Cacciavite



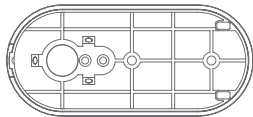
Vite di fissaggio



Nastro biadesivo



Base



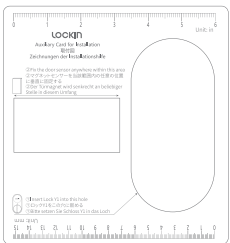
Cacciavite



Vite M3*6

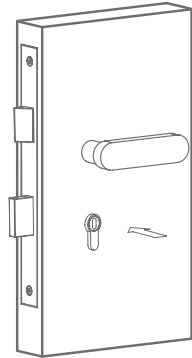


Scheda di aiuto per l'installazione

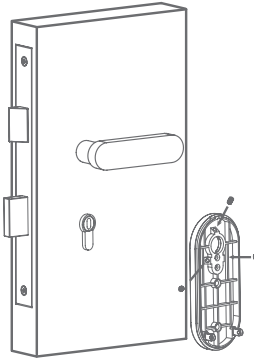


REQUISITI DI INSTALLAZIONE

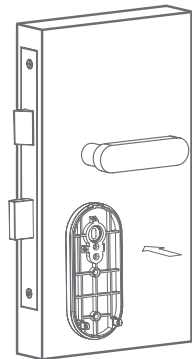
1. Installare la base sulla serratura



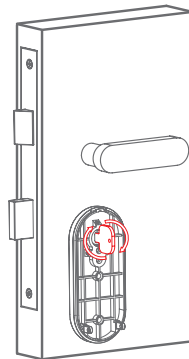
2. Assicurarsi che la base sia installata correttamente e fissarla con le viti di fissaggio.



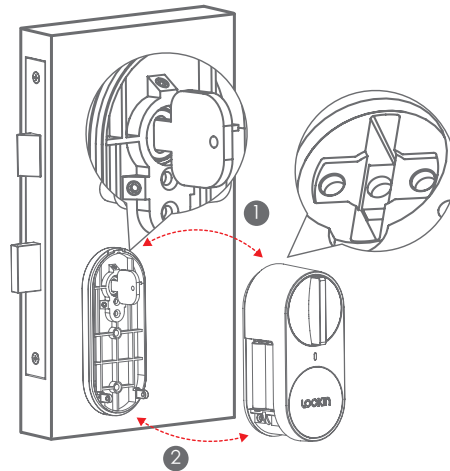
3. Inserire la chiave nella serratura



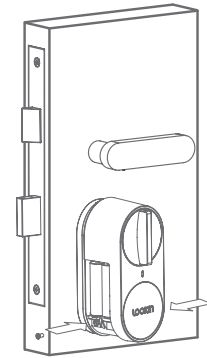
4. Ruotando la chiave, verificare se la rotazione è agevole e se il perno di bloccaggio può essere retrato.



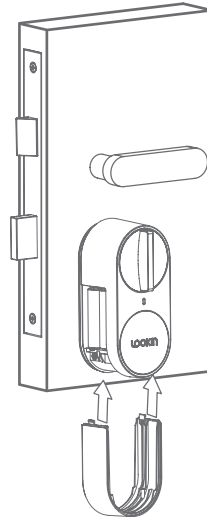
5. Installare il corpo principale della serratura sulla base. Assicurarsi che il chiavistello sia innestato sul bordo inferiore della base e che la chiave sia inserita nella scanalatura della manopola.



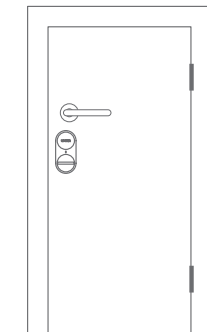
6. Fissare il corpo della serratura con le viti: Ruotare la manopola della serratura per verificare che tutto funzioni regolarmente e senza ostacoli.



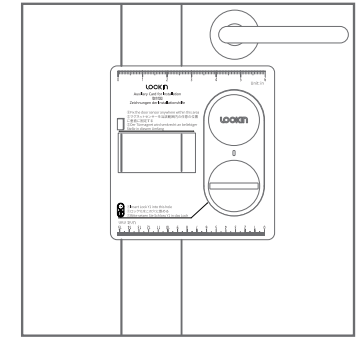
7. Riposizionare il coperchio della batteria



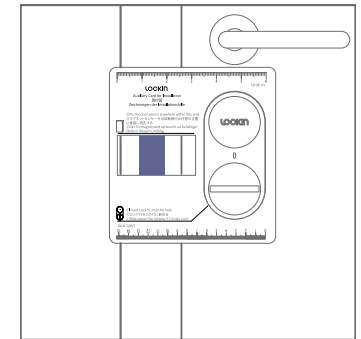
8. L'installazione della parte principale della serratura è quasi completata. Infine, installare il sensore magnetico della porta seguendo le istruzioni seguenti.



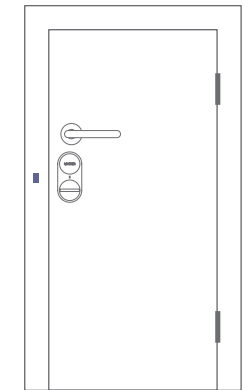
9. Posizionare la scheda ausiliaria di installazione sulla serratura della porta, come illustrato nella figura. Nota: se la serratura si trova sul lato destro della porta, inserire la scheda ausiliaria al contrario.



10. In base alla posizione designata con la scheda di installazione, fissare il sensore magnetico della porta al telaio della porta utilizzando il nastro biadesivo. Nota: il sensore magnetico della porta potrebbe non funzionare correttamente se il sensore è installato su un telaio metallico della porta. In questo caso, non installare il sensore magnetico della porta.



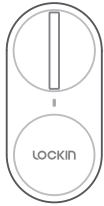
11. In questo modo si completa l'installazione della serratura intelligente.



L'installazione è adatta solo per una serratura a cilindro con frizione passante.

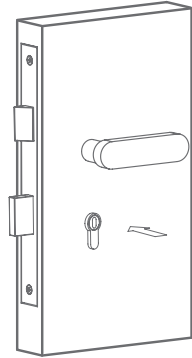


immax
**neo
LITE**
Smart home devices

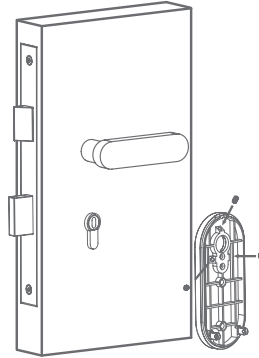


UZSTĀDĪŠANAS PRASĪBAS

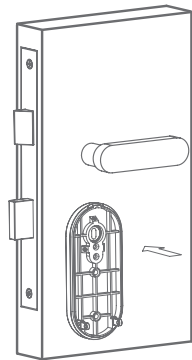
1. Uzstādiet pamatni uz slēdzenes



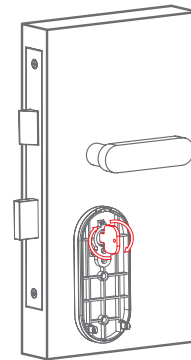
2. Pārlicinieties, ka pamatne ir pareizi uzstādīta, un nostipriniet ar stiprinājuma skrūvēm.



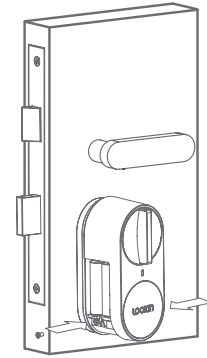
3. Ievietojiet atslēgu slēdzenē



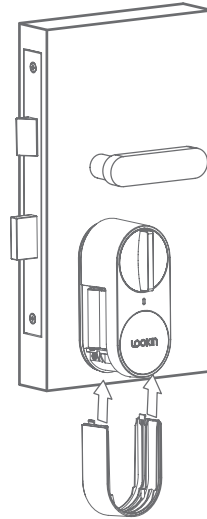
4. Pagriezot atslēgu, pārbaudiet, vai to var pagriezt vienmērīgi un vai bloķēšanas tapu var ievilk.



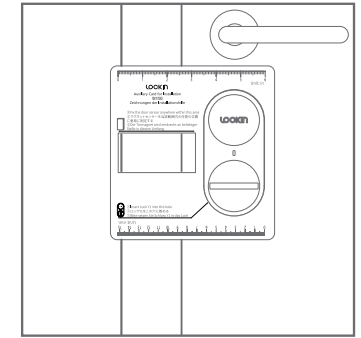
6. Piestipriniet slēdzenes korpusu ar skrūvēm: Pagrieziet slēdzenes rokturi, lai pārbaudītu, vai viss darbojas vienmērīgi un bez šķēršļiem.



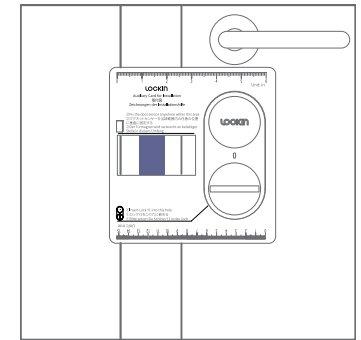
7. Nomainiet akumulatora vāciņu



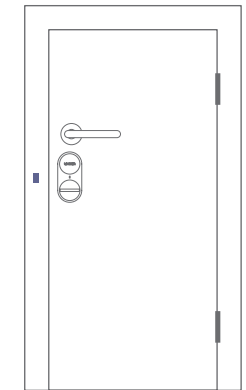
9. Uz durvju slēdzenes ievietojiet uzstādīšanas palīdzības karti, skat. attēlu. Piezīme: Ja slēdzene atrodas durvju labajā pusē, ievietojiet palīgkartī otrādi.



10. Pamatojoties uz uzstādīšanas kartē norādīto pozīciju, piestipriniet durvju magnētisko sensoru pie durvju rāmja, izmantojot abpusēji līmējošu lentu. Piezīme: durvju magnētiskais sensors var nedarboties pareizi, ja sensors ir uzstādīts uz metāla durvju rāmja. Šādā gadījumā durvju magnētisko sensoru neinstalējiet.



11. Ar to tiek pabeigta viedās slēdzenes uzstādīšana.



LIETOTĀJA ROKASGRĀMATA

Ražotājs un importētājs:
IMMAX, Pohoří 703, 742 85 Vřesina, ES |
www.immax.cz Ražots KĀR.

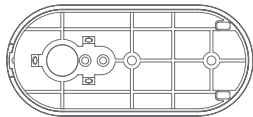


Immax NEO LITE Viedā durvju slēdzene Bloķēšana ar tastatūru un viedo vārteju, BT

Magnētiskais sensors



Bāze



Skrūvgriezis



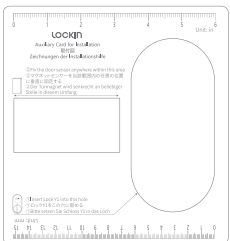
Skrūvgriezis



M3*6 skrūve



Instalēšanas palīdzības cilne



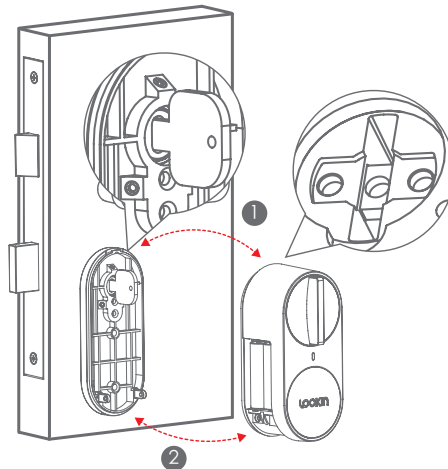
Stiprinājuma skrūve



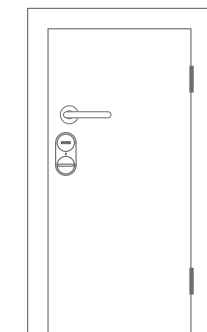
Divpusējā lente



5. Uzstādiet slēdzenes galveno korpusu uz pamatnes. Pārlicinieties, ka slēdzene ir ievietota pamatnes apakšējā malā un atslēga ir ievietota rotācijas pogas rievā.



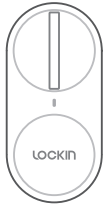
8. Slēdzenes galvenās daļas uzstādīšana ir gandrīz pabeigta. Visbeidzot, uzstādiet durvju magnētisko sensoru saskaņā ar turpmāk sniegtajiem norādījumiem.



Uzstādīšana ir piemērota tikai cilindra slēdzenei ar caur (caur) sajūgu.



immax
**neo
LITE**
Smart home devices



VARTOTOJO VADOVAS

Gamintojas ir importuotojas:
IMMAX, Pohofí 703, 742 85 Vfesina, ES |
www.immax.cz Pagaminta Kipre.



"Immax NEO LITE" išmanioji durų spyna Užraktas su klaviatūra ir išmaniaisiais vartais, BT

Magnetinis jutiklis



Atsuktuvus



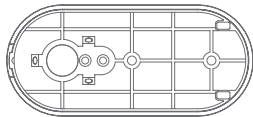
Tvirtinimo varžtas



Dvipusė juosta



Bazė



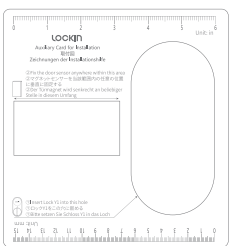
Atsuktuvus



M3*6 varžtas

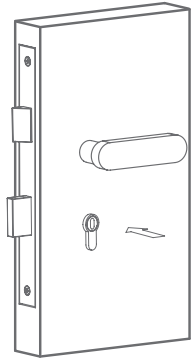


Įdiegimo pagalbos skirtukas

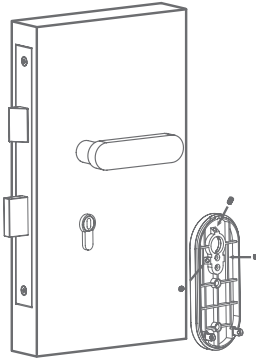


MONTAVIMO REIKALAVIMAI

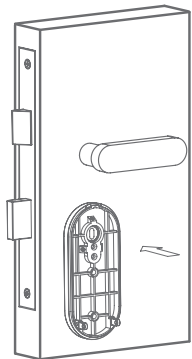
1. Uždėkite pagrindą ant spynos



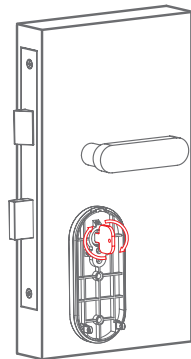
2. Įsitinkinkite, kad pagrindas sumontuotas teisingai, ir pritvirtinkite jį tvirtinimo varžtais.



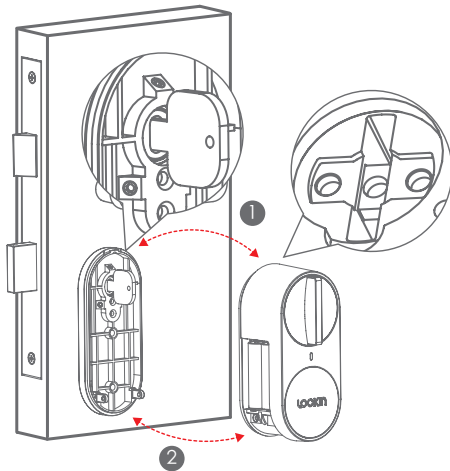
3. Įkiškite raktą į spyną



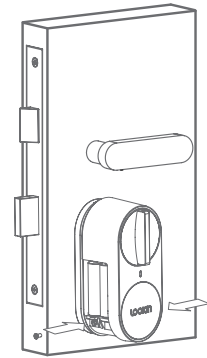
4. Sukdami raktą patikrinkite, ar ji galima sklandžiai pasukti ir ar užrakto kaištį galima įkišti.



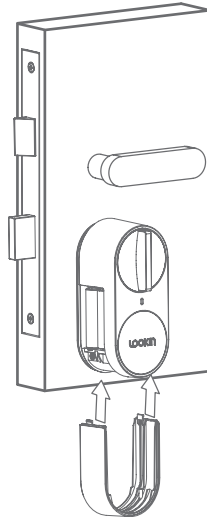
5. Uždėkite pagrindinį spynos korpusą ant pagrindo. Įsitinkinkite, kad užraktas yra užfiksuotas apatiniame pagrindo krašte, o raktas įkištas į sukamosios rankenėlės griovelį.



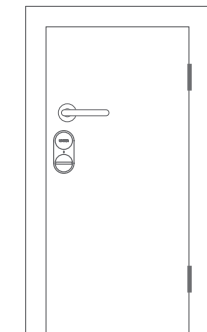
6. Užrakto korpusą pritvirtinkite varžtais: Pasukite spynos rankenėlę, kad patikrintumėte, ar viskas veikia sklandžiai ir be kliūčių.



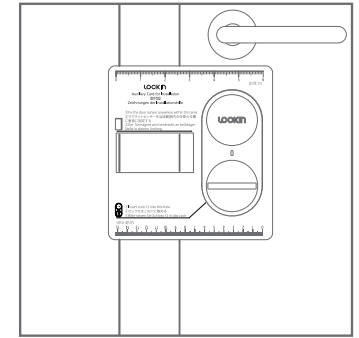
7. Uždėkite akumuliatoriaus dangtelį



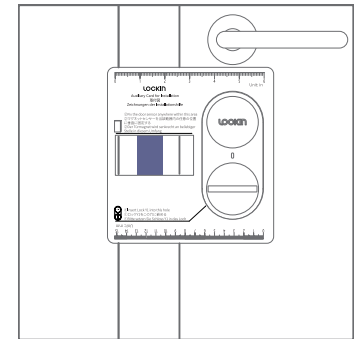
8. Pagrindinės spynos dalies montavimas beveik baigtas. Galiausiai sumontuokite durų magnetinį jutiklį pagal toliau pateiktus nurodymus.



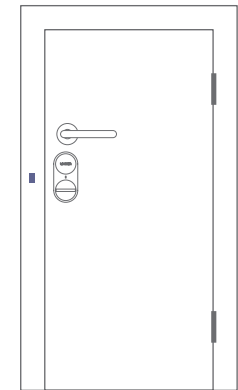
9. Uždėkite montavimo pagalbos kortelę ant durų spynos, žr. paveikslėlį. Pastaba: kai spyna yra dešinėje durų pusėje, pagalbinę kortelę įdėkite atvirkščiai.



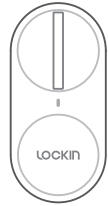
10. Pagal montavimo kortelėje nurodytą vietą pritvirtinkite durų magnetinį jutiklį prie durų rėmo naudodami dvipusę lipnią juostą. Pastaba: magnetinis durų jutiklis gali tinkamai neveikti, jei jutiklis montuojamas ant metalinės durų staktos. Tokiu atveju durų magnetinio jutiklio nemontuokite.



11. Taip užbaigiamas išmaniojo užrakto diegimas.



Šis montavimas tinka tik cilindriniam užraktui su perdidžiamąja (tranzitinė) sankaba.



MANUAL DO UTILIZADOR

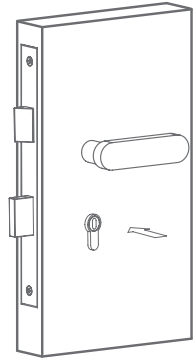
Fabricante e importador:
IMMAX, Pohofí 703, 742 85 Vřesina, EU |
www.immax.cz Fabricado na R.P.C.



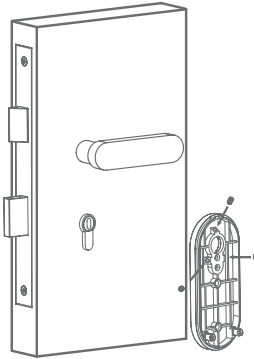
Immax NEO LITE Fechadura inteligente para portas
Fechadura com teclado e um gateway inteligente, BT

REQUISITOS DE INSTALAÇÃO

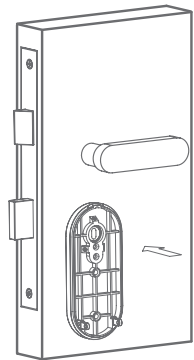
1. Instalar a base no cadeado



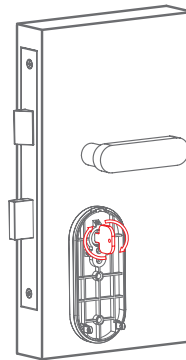
2. Certifique-se de que a base está corretamente instalada e fixe-a com os parafusos de fixação



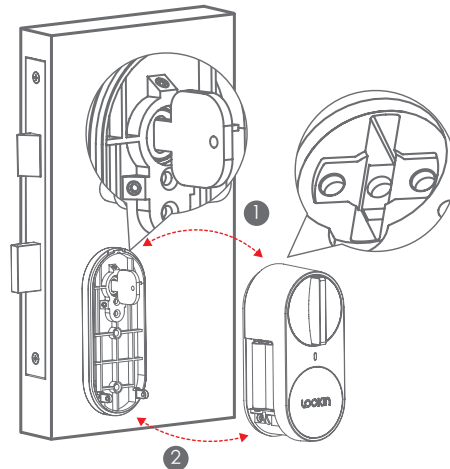
3. Introduzir a chave na fechadura



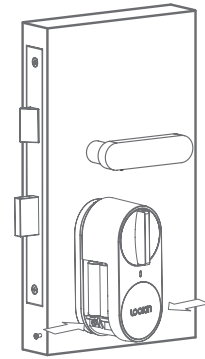
4. Ao rodar a chave, verificar se esta pode ser rodada suavemente e se a cavilha de bloqueio pode ser recolhida.



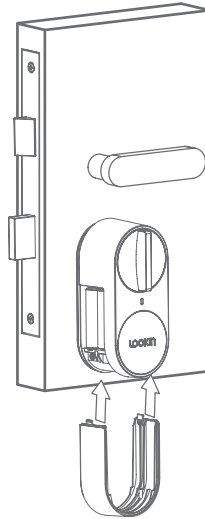
5. Instale o corpo principal do cadeado na base. Certifique-se de que o trinco está encaixado na extremidade inferior da base e que a chave está inserida na ranhura do botão rotativo



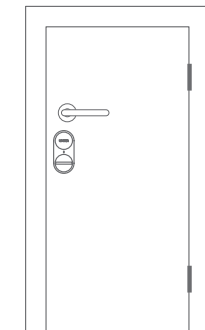
6. Fixar o corpo da fechadura com parafusos: Rode o botão do cadeado para verificar se tudo funciona corretamente e sem obstáculos



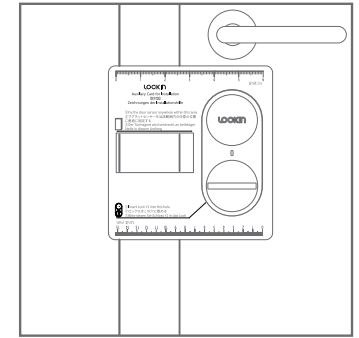
7. Voltar a colocar a tampa da bateria



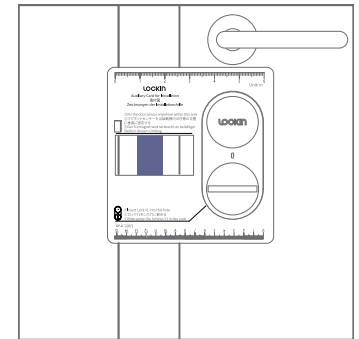
8. A instalação da parte principal da fechadura está quase concluída. Finalmente, instale o sensor magnético da porta de acordo com as instruções seguintes.



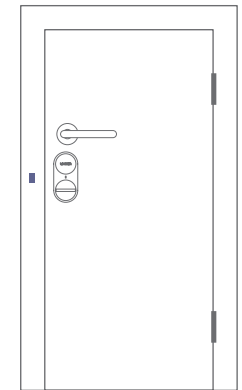
9. Coloque o cartão de ajuda à instalação no fecho da porta, ver imagem.
Nota: Quando a fechadura se encontra no lado direito da porta, insira o cartão auxiliar no sentido inverso.



10. Com base na posição designada utilizando o cartão de instalação, fixe o sensor magnético da porta ao caixilho da porta utilizando fita adesiva de dupla face. Nota: O sensor magnético da porta pode não funcionar corretamente se o sensor for instalado numa moldura de porta metálica. Neste caso, não instale o sensor magnético de porta.



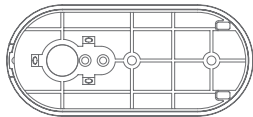
11. A instalação do smart lock fica assim concluída.



Sensor magnético



Base



Chave de fendas



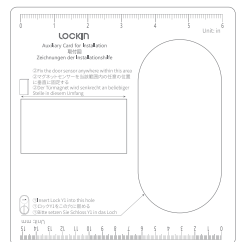
Chave de fendas



Parafuso M3*6



Separador de ajuda para a instalação



Parafuso de fixação



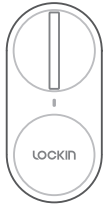
Fita adesiva de dupla face



A instalação só é adequada para uma fechadura de cilindro com uma embraiagem de passagem.



immax
**neo
LITE**
Smart home devices



UPORABNIŠKI PRAVILNIK

Proizvajalec in uvoznik:
IMMAX, Pohofi 703, 742 85 Vřesina, EU |
www.immax.cz Izdelano v P.R.C.



Immax NEO LITE Pametna vratna ključavnica
Zaklepanje s tipkovo in pametnim prehodom, BT

Magnetni senzor



Vijačnik



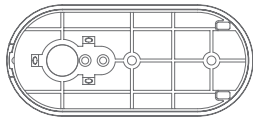
Pridrlni vijak



Dvostranski trak



Osnova



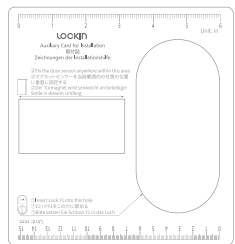
Vijačnik



Vijak M3*6

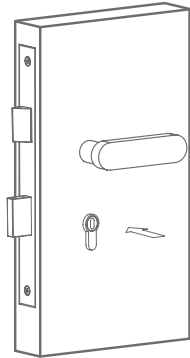


zavihek Pomoč za namestitev

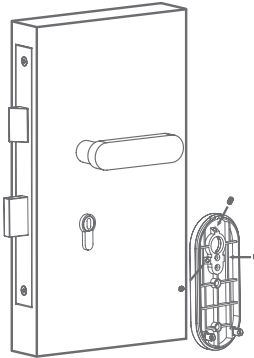


ZAHTEVE ZA NAMESTITEV

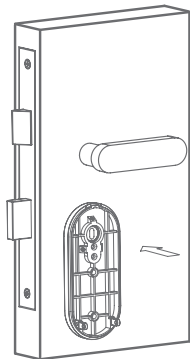
1. Osnovo namestite na ključavnico



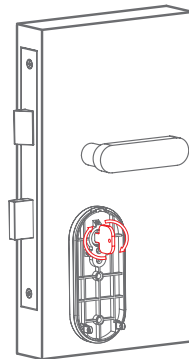
2. Prepričajte se, da je podstavek pravilno nameščen, in ga pritrdite s pridrlnimi vijaki.



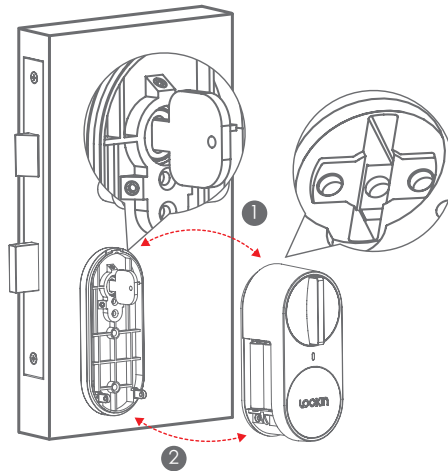
3. Vstavite ključ v ključavnico



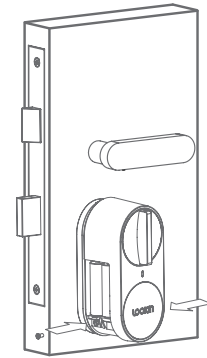
4. Z obračanjem ključa preverite, ali ga je mogoče gladko obračati in ali je zaklepni zatič mogoče umakniti.



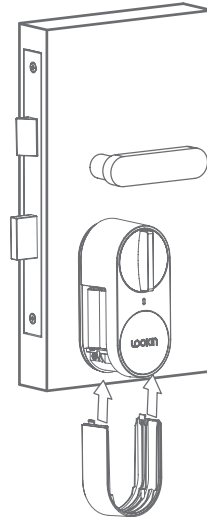
5. Namestite glavno telo ključavnice na podstavek. Prepričajte se, da je ključavnica zaskočena na spodnjem robu podstavka in da je ključ vstavljen v utor vrtljivega gumba.



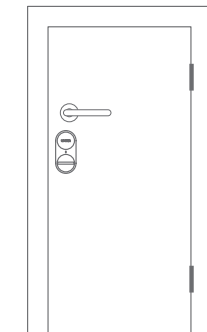
6. Telo ključavnice pritrdite z vijaki: Obrnite gumb na ključavnici in preverite, ali vse deluje gladko in brez ovir.



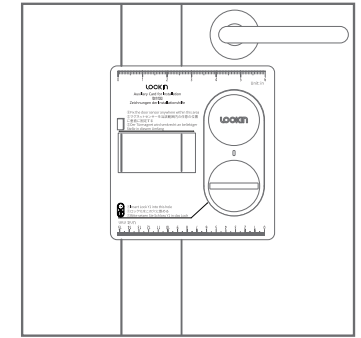
7. Zamenjajte pokrov baterije



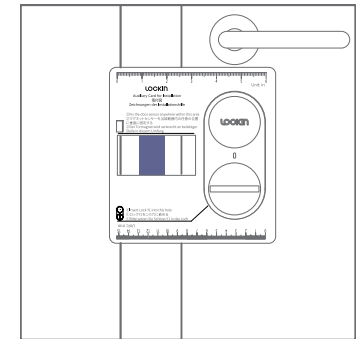
8. Vgradnja glavnega dela ključavnice je skoraj končana. Nazadnje namestite magnetni senzor vrat v skladu z naslednjimi navodili.



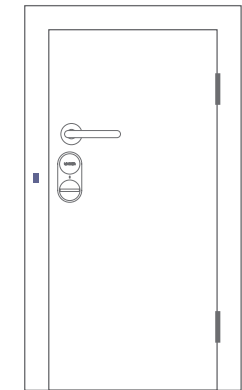
9. Na vratno ključavnico namestite kartico Pomoč pri namestitvi, glejte sliko. Opomba: Če je ključavnica na desni strani vrat, vstavite pomožno kartico v obratni smeri.



10. Na podlagi določenega položaja na namestitveni kartici pritrdite magnetni senzor na okvir vrat z obojestranskim lepilnim trakom. Opomba: Magnetni senzor vrat morda ne bo pravilno deloval, če je senzor nameščen na kovinski okvir vrat. V tem primeru magnetnega sensorja vrat ne nameščajte.



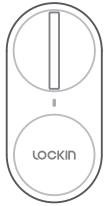
11. S tem je namestitev pametne ključavnice končana.



Vgradnja je primerna le za cilindrično ključavnico s prehodno sklopko.

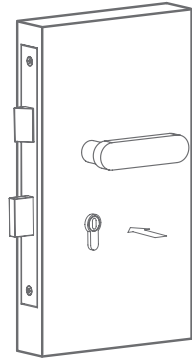


immax
**neo
LITE**
Smart home devices

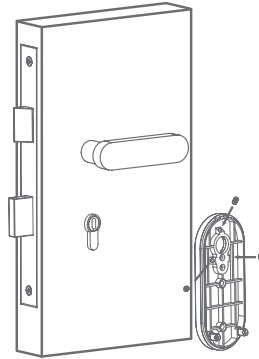


REQUISITOS DE INSTALACIÓN

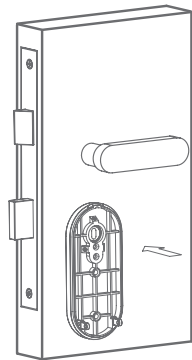
1. Instale la base en la cerradura



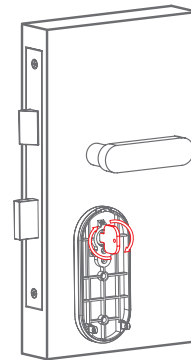
2. Asegúrese de que la base está instalada correctamente y fijela con los tornillos de fijación



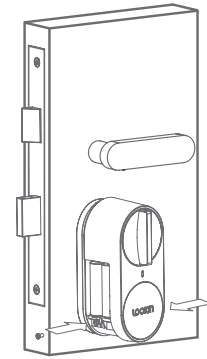
3. Introduzca la llave en la cerradura



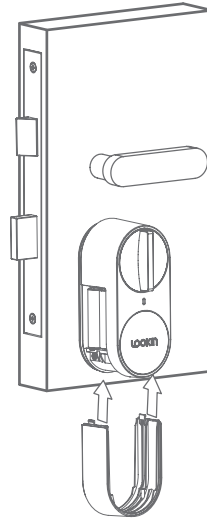
4. Al girar la llave, compruebe si se puede girar suavemente y si el pasador de bloqueo se puede retraer.



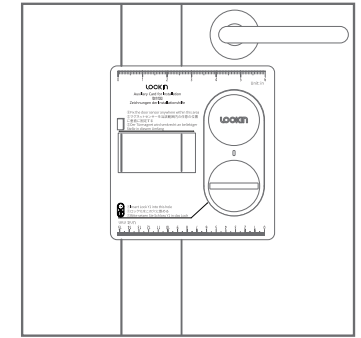
6. Fije el cuerpo de la cerradura con tornillos: Gira el pomo de la cerradura para comprobar que todo funciona con suavidad y sin obstáculos



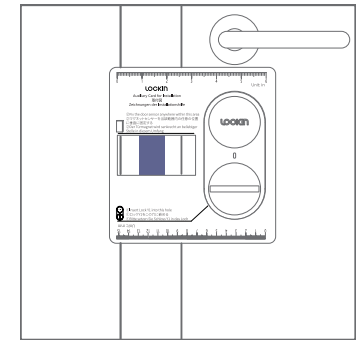
7. Vuelva a colocar la tapa de las pilas



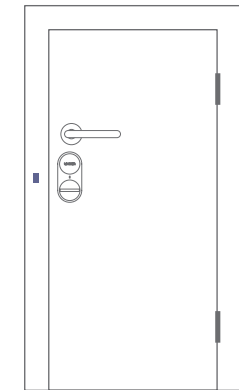
9. Coloque la Tarjeta Auxiliar de Instalación en la cerradura de la puerta, vea la imagen. Nota: Cuando la cerradura está en el lado derecho de la puerta, inserte la Tarjeta Auxiliar al revés.



10. Basándose en la posición designada mediante la tarjeta de instalación, fije el sensor magnético de puerta al marco de la puerta utilizando cinta adhesiva de doble cara. Nota: Es posible que el sensor magnético de puerta no funcione correctamente si el sensor se instala en un marco de puerta metálico. En este caso, no instale el sensor magnético de puerta.



11. Esto completa la instalación de la cerradura inteligente.



MANUAL DEL USUARIO

Fabricante e importador:
IMMAX, Pohoř.™ Á 703, 742 85 VĹ.™ esina, EU |
www.immax.cz Made in P.R.C.

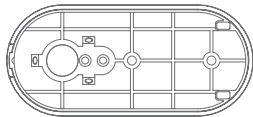


Immax NEO LITE Cerradura de puerta inteligente
Lockin con teclado y una puerta de enlace
inteligente, BT

Sensor magnético



Base



Destornillador

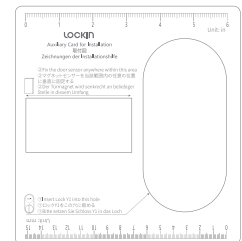
Destornillador

Tornillo M3*6

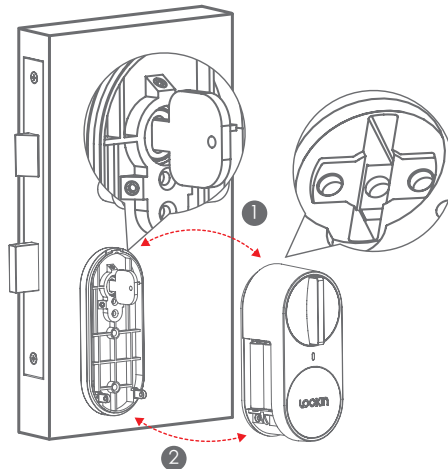


Tornillo de fijación

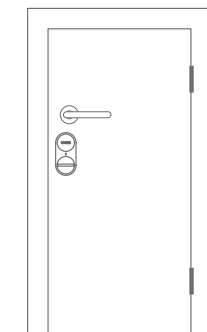
Pestaña de ayuda para la instalación



5. Instale el cuerpo principal de la cerradura en la base. Asegúrese de que el pestillo esté encajado en el borde inferior de la base y de que la llave esté introducida en la ranura del pomo giratorio



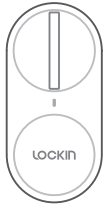
8. La instalación de la parte principal de la cerradura está casi terminada. Por último, instale el sensor magnético de la puerta de acuerdo con las siguientes instrucciones.



La instalación sólo es adecuada para una cerradura de cilindro con embrague pasante.



immax
**neo
LITE**
Smart home devices



ANVÄNDARHANDBOK

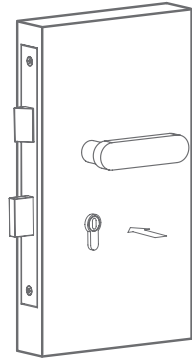
Tillverkare och importör:
IMMAX, Pohofí 703, 742 85 Vřesina, EU
www.immax.cz Tillverkad i P.R.C.



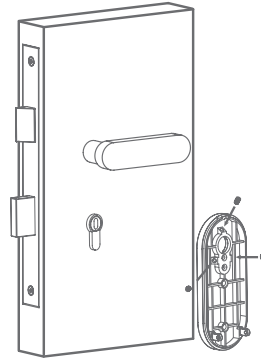
Immax NEO LITE Smart dörrlås Lås med knappsats och en smart gateway, BT

INSTALLATIONSKRAV

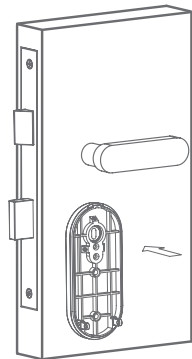
1. Montera basen på låset



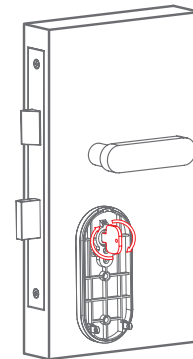
2. Kontrollera att basen är korrekt installerad och fäst den med fästskruvarna



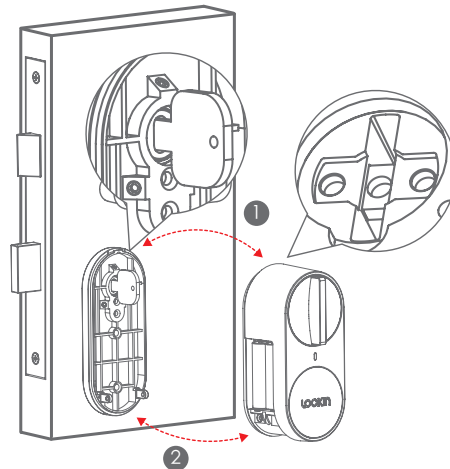
3. Sätt i nyckeln i låset



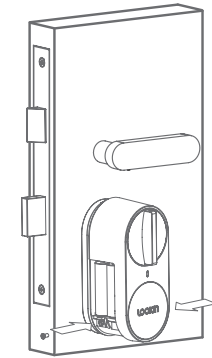
4. Kontrollera om nyckeln går att vrida mjukt och om låsstiftet går att dra tillbaka genom att vrida om den.



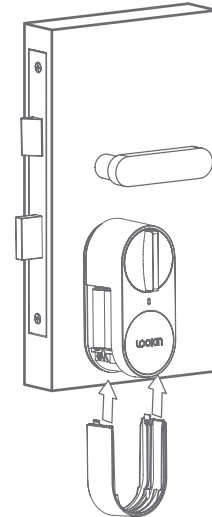
5. Montera låsets huvuddel på basen. Se till att spärren är i ingrepp på basens nedre kant och att nyckeln är insatt i spåret på vridknappen



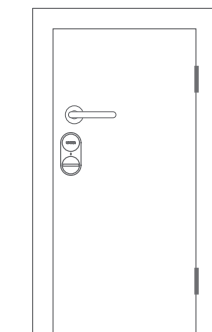
6. Fäst låskroppen med skruvar: Vrid vredet på låset för att kontrollera att allt fungerar smidigt och utan hinder



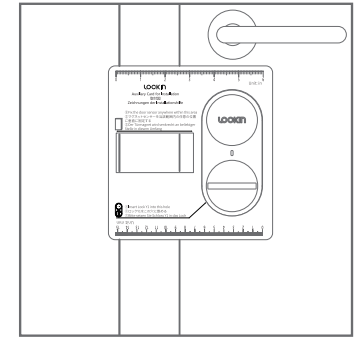
7. Sätt tillbaka batteriluckan



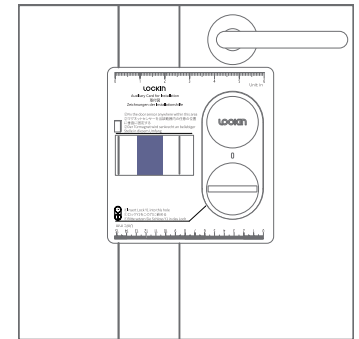
8. Installationen av låsets huvuddel är nästan klar. Installera slutligen dörrsens magnetiska sensor enligt följande instruktioner.



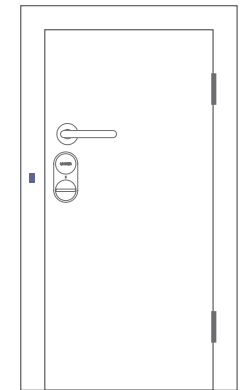
9. Placera installationshjälpkortet på dörrlåset, se bilden. Obs: När låset sitter på höger sida av dörren ska du sätta i hjälpkortet baklänges.



10. Baserat på den angivna positionen med hjälp av installationskortet, fäst den magnetiska dörrsensorn på dörrkarmen med dubbelhäftande tejp. Obs: Den magnetiska dörrsensorn kanske inte fungerar korrekt om sensorn installeras på en dörrkarm av metall. I så fall ska du inte installera den magnetiska dörrsensorn.



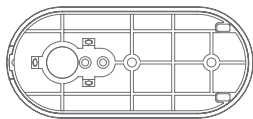
11. Installationen av det smarta låset är nu slutförd.



Magnetisk sensor



Bas



Skruvmejsel



Skruvmejsel



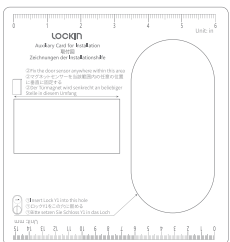
M3*6 skruv



Fästskruv



Hjälpflik för installation



Dubbelsidig tejp



Installationen är endast lämplig för cylinderlås med genomgående (genomgående) koppling.